

# FOG Program Development

## ■ Permittee Identification & Categorization

– What information sets to collect / track?

- Contact Information

- Information about G.I. Sizing per UPC is critical

– Categorize Permittees

- GIS - “Hot Spots” and G.I. Sizing Information

- Category 1 - Have G.I.

- Category 2 – In Hot Spot, Contribute to Hot Spot

- Category 3 – In or Out of Hot Spot, does not appear to be a major source of FOG at this point, follow up for confirmation

- Category 4 – Not in a Hot Spot, unlikely to be a major FOG contributor

- Category 5 – Limited FSE, not permitted, not a FOG source

# FOG Program Development

## ■ FOG Ordinance Adoption

### – Elements to support the Ordinance

- Local Prohibitions
- Requirement for obtaining / possessing a discharge permit
- Establishment of Best Management Practices and Reporting
- New Construction to include G.I. Installation
- Waivers / Variances / Grease Disposal Mitigation Fee
- Exemption for Limited FSE's
- Grease Interceptor Reporting Requirements / 25% Rule
- Fees, reimbursement of SSO costs

# FOG Program Development

- Public Workshop
  - Distribute FAQ's and program materials
  - Q&A for attendees
- Development and Weekly F.A.Q. Mailing
  - Saturate permittees with program information

# FOG Program Development

- Toolbox
  - PSA and Training DVD
  - FAQ's
  - Posters
- GIS service area map

# FOG Program Elements

## ■ Initial Permitting

– Program walkthrough with 150 permittees

- Permit requirements
- Kitchen BMP's
- DVD (Training and PSA)
- Ordinance
- FAQ's
- Logs / Forms
- Category discussion / G.I. Installation

# FOG Program Elements

## ■ Self Monitoring Program

### – Kitchen Best Management Practices

- Biannual reporting
- Routine training of employees in Kitchen BMP's

### – Grease Interceptor Wastehauling

- Biannual reporting
- G.I. Wastehauling period



# FOG Program Elements

## ■ Inspection

- Outsourced
- Kitchen BMP and G.I. Inspections
- C.A.N and N.O.V.
- Inspection report generation

## ■ Permitting and Enforcement

- Permittees – City of Tustin coordination
- G.I. installations

# SSO Sources

## ■ SSO source identification

- Food Service Establishments
  - FOG Discharge
- Structural problems
  - Slope, Cracks, Offsets
- High density residential
  - FOG Discharge
- Maintenance
  - Roots



# Collaboration

## ■ Stakeholder Identification

– Which groups are involved in dealing with SSO's?

- FSE related – Source Control
- Structural – Engineering/Construction
- High density residential – Communications / Public Outreach
- Maintenance – O&M / Collections

# Collaboration

## ■ Team Development

- SSO Response team

- React to current SSO

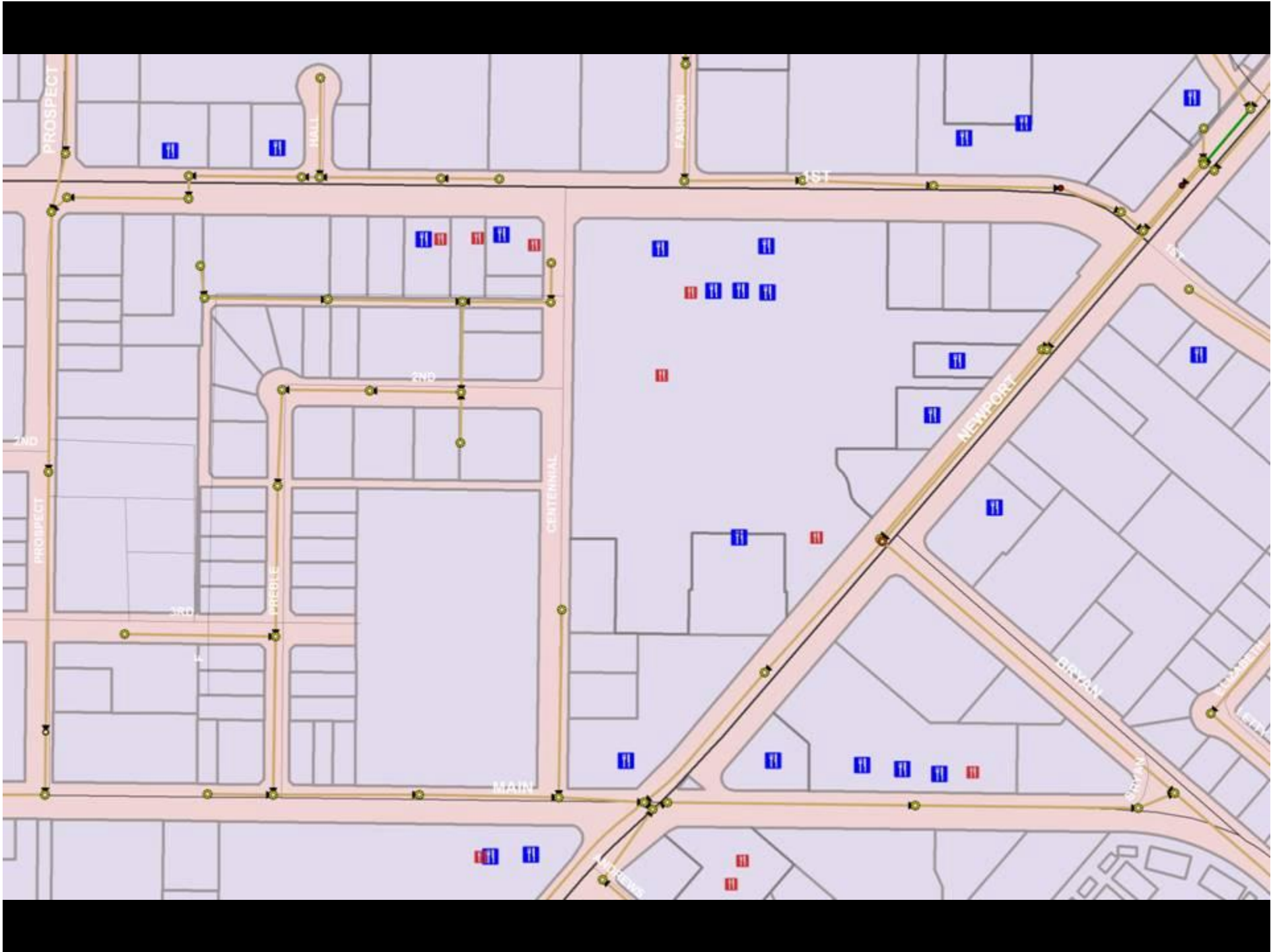
- Use GIS data, CCTV Studies, and interdepartmental coordination to plan for “hot spot” reduction / elimination.

## ■ Measurement Tool

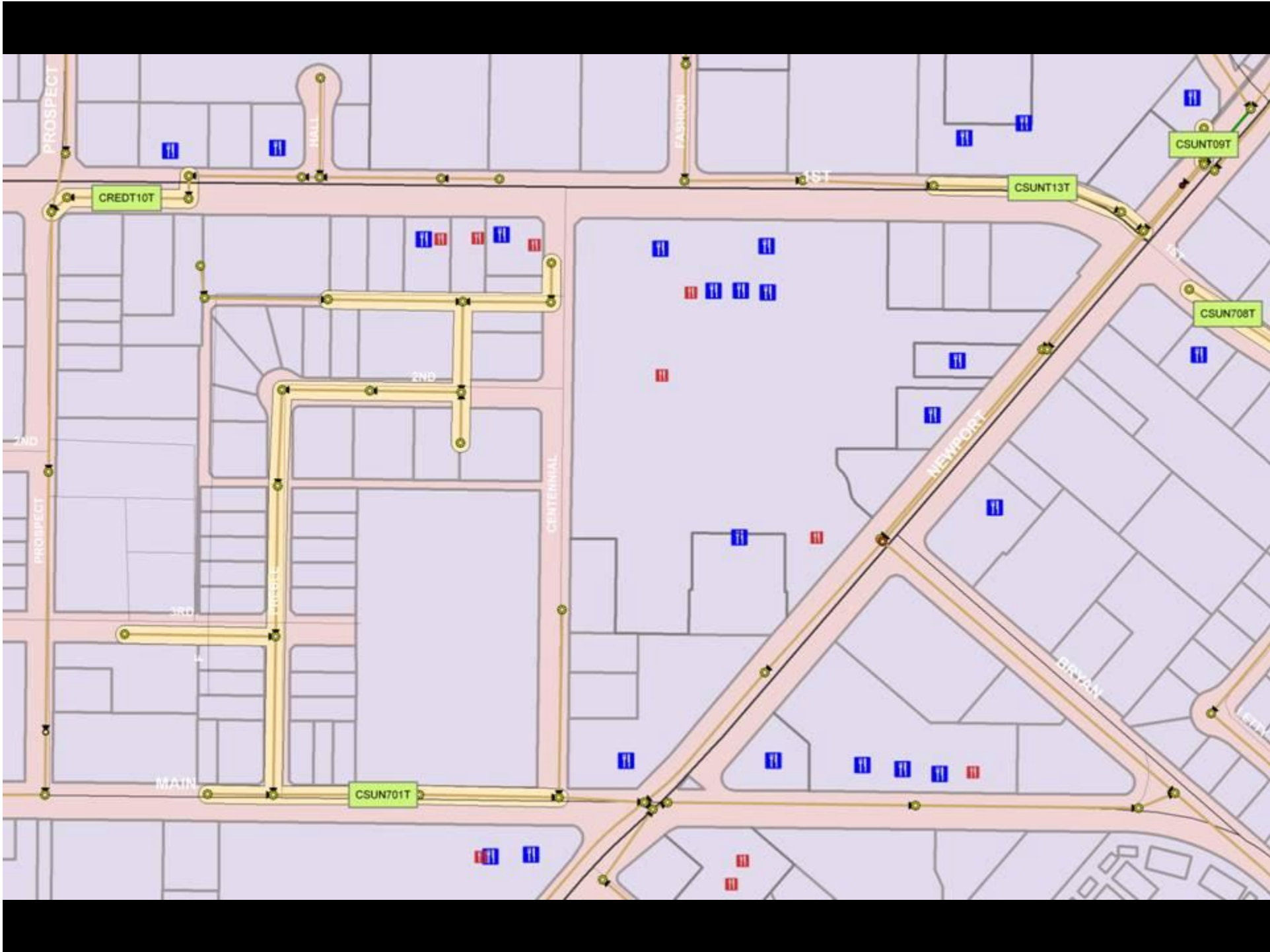
- GIS - Backbone of interdepartmental collaboration

# Using GIS to Aid Program Management

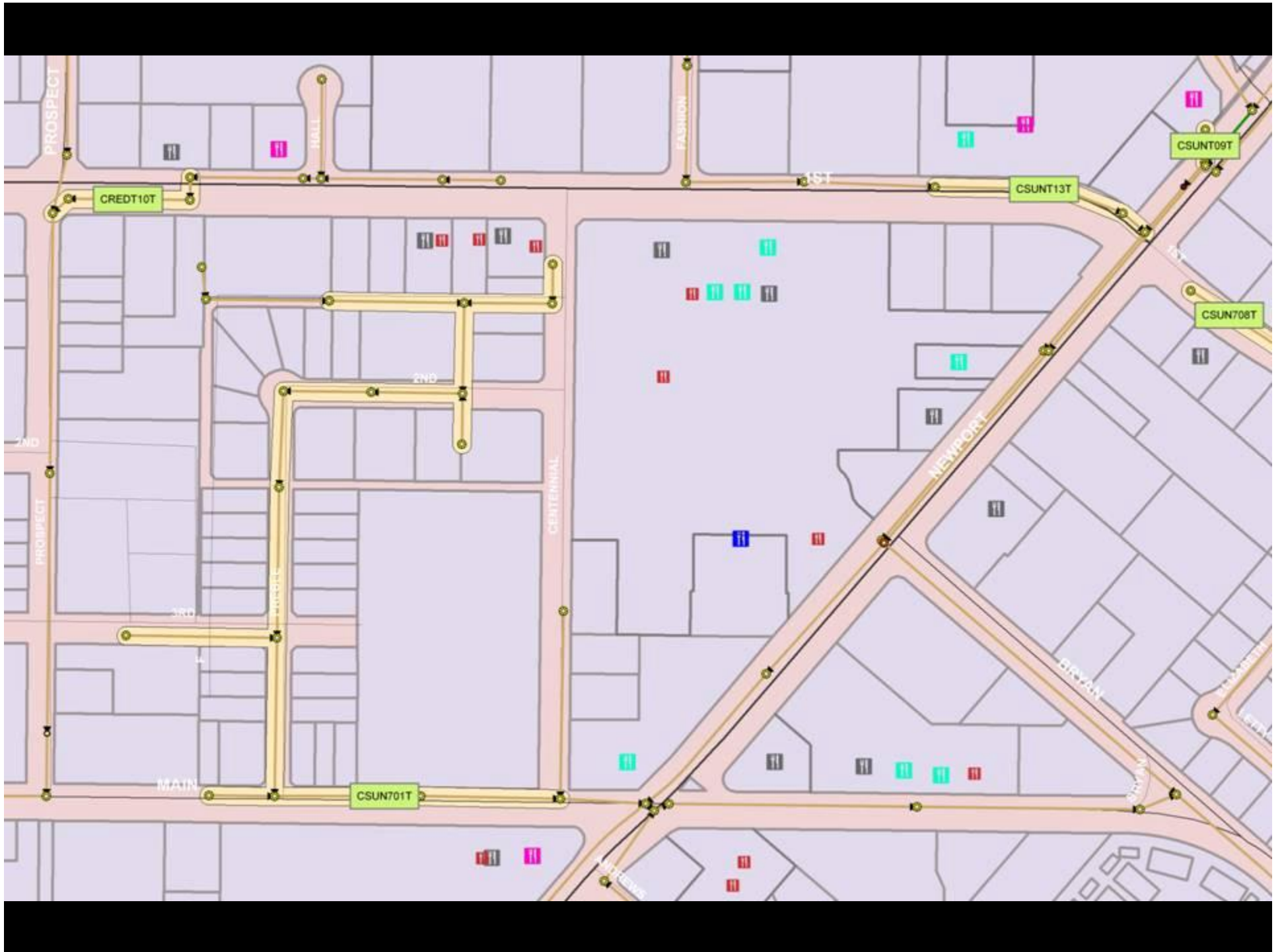












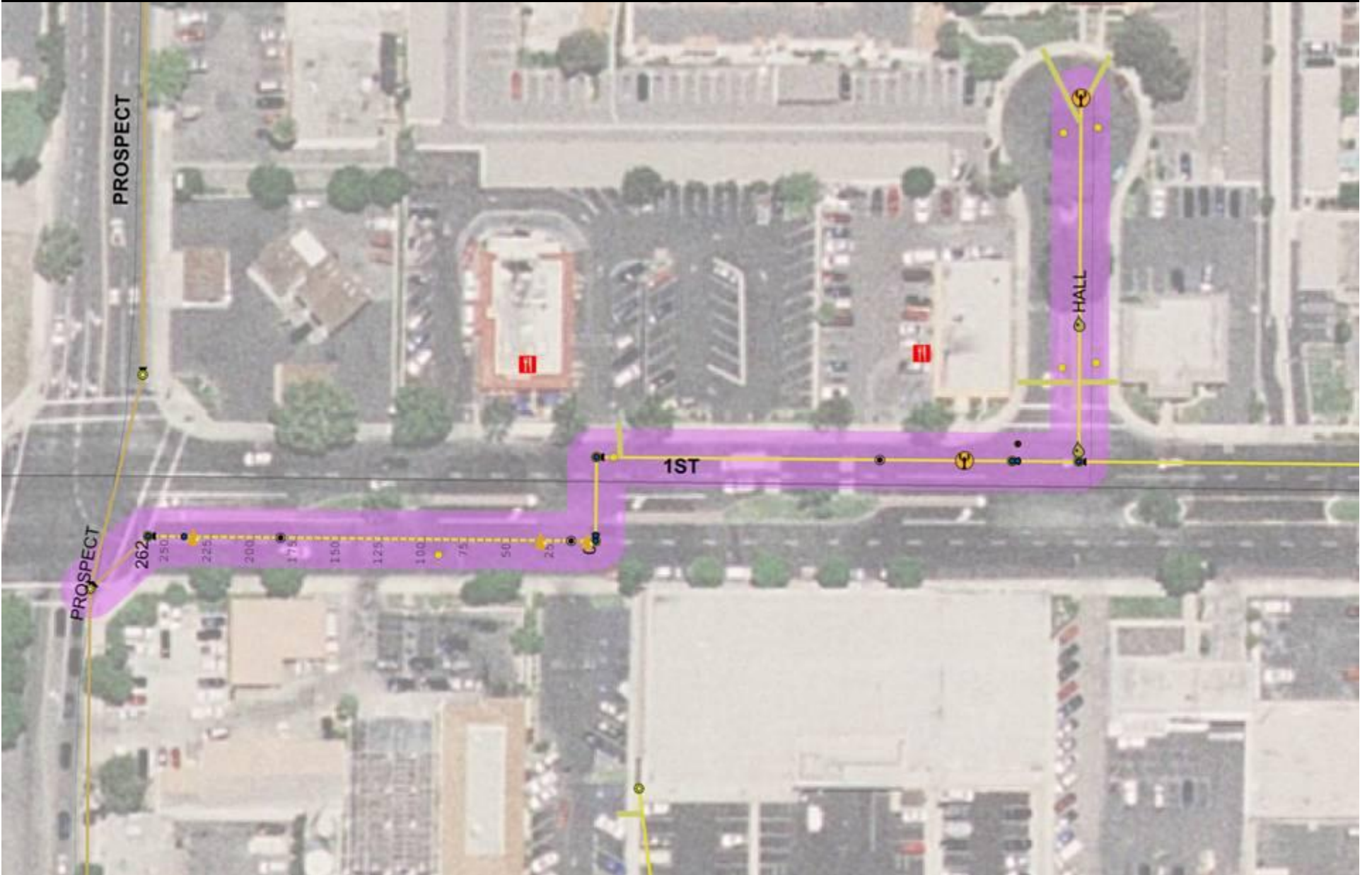
# Measuring Effectiveness Through CCTV



# What's Going On with the CCTV Project

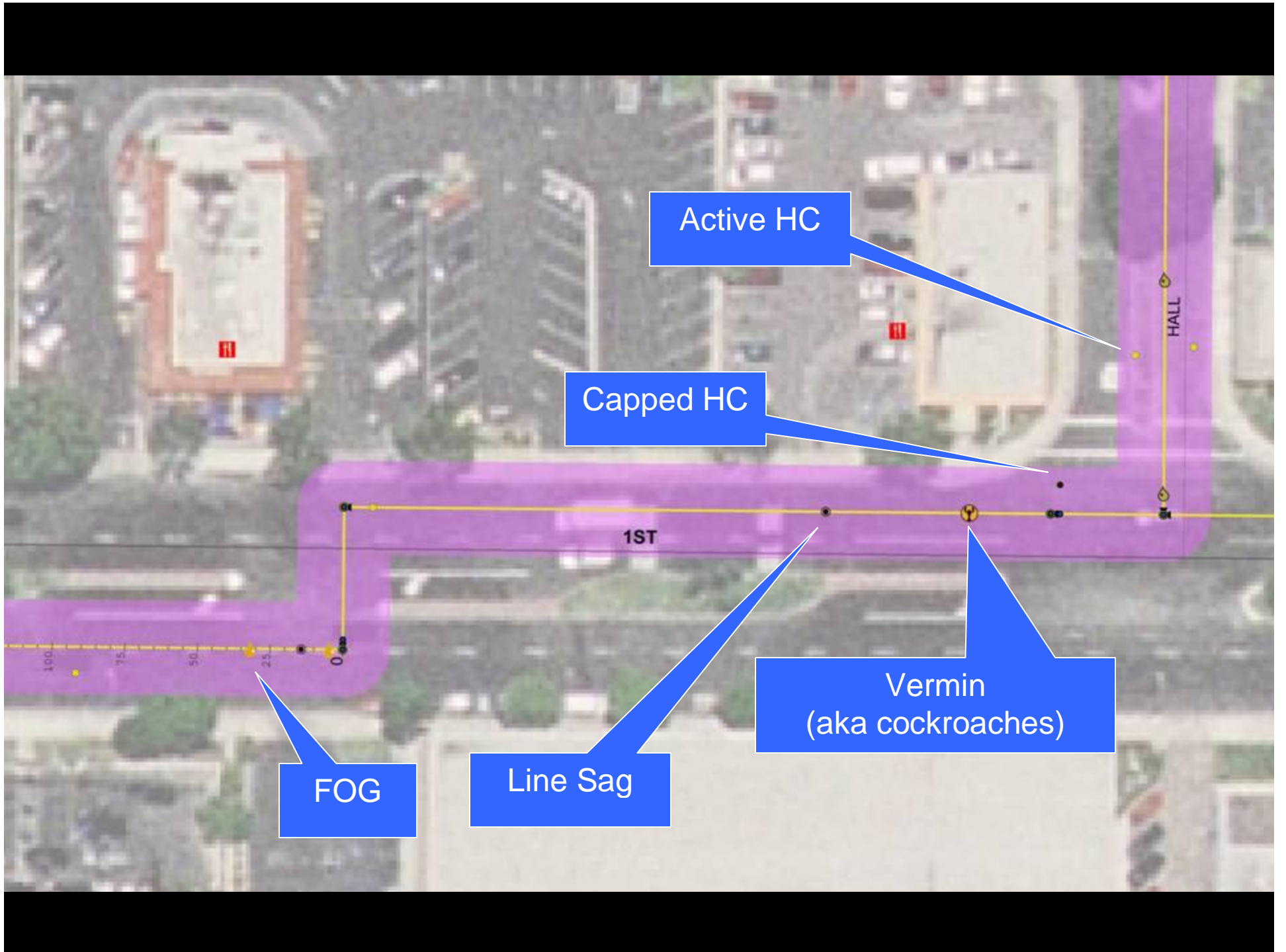
- Currently receiving data from the field work
- Conducting analysis of the CCTV observations
- Developing and evaluating measurement system











Active HC

Capped HC

Vermin  
(aka cockroaches)

Line Sag

FOG

1ST

HALL

100

75

50

25

0

# War Story #1: Ruby's Diner





ITALIAN EXPRESS

D K'S DONUTS

CALIFORNIA CUISINE RESTAURANT

RUBY'S DINER

YOGI'S TERIYAKI HOUSE

KAI SUSHI

IRVINE CHINESE FOOD

PAPA JOHN'S PIZZA

RALPHS

DON JOSE

LONE STAR STEAK HOUSE

COCO'S #153

ALBERTSONS

KENTUCKY FRIED CHICKEN

IRVINE

HOLT

NEWPORT

PACKERS

OLD IRVINE

ELIZABETH

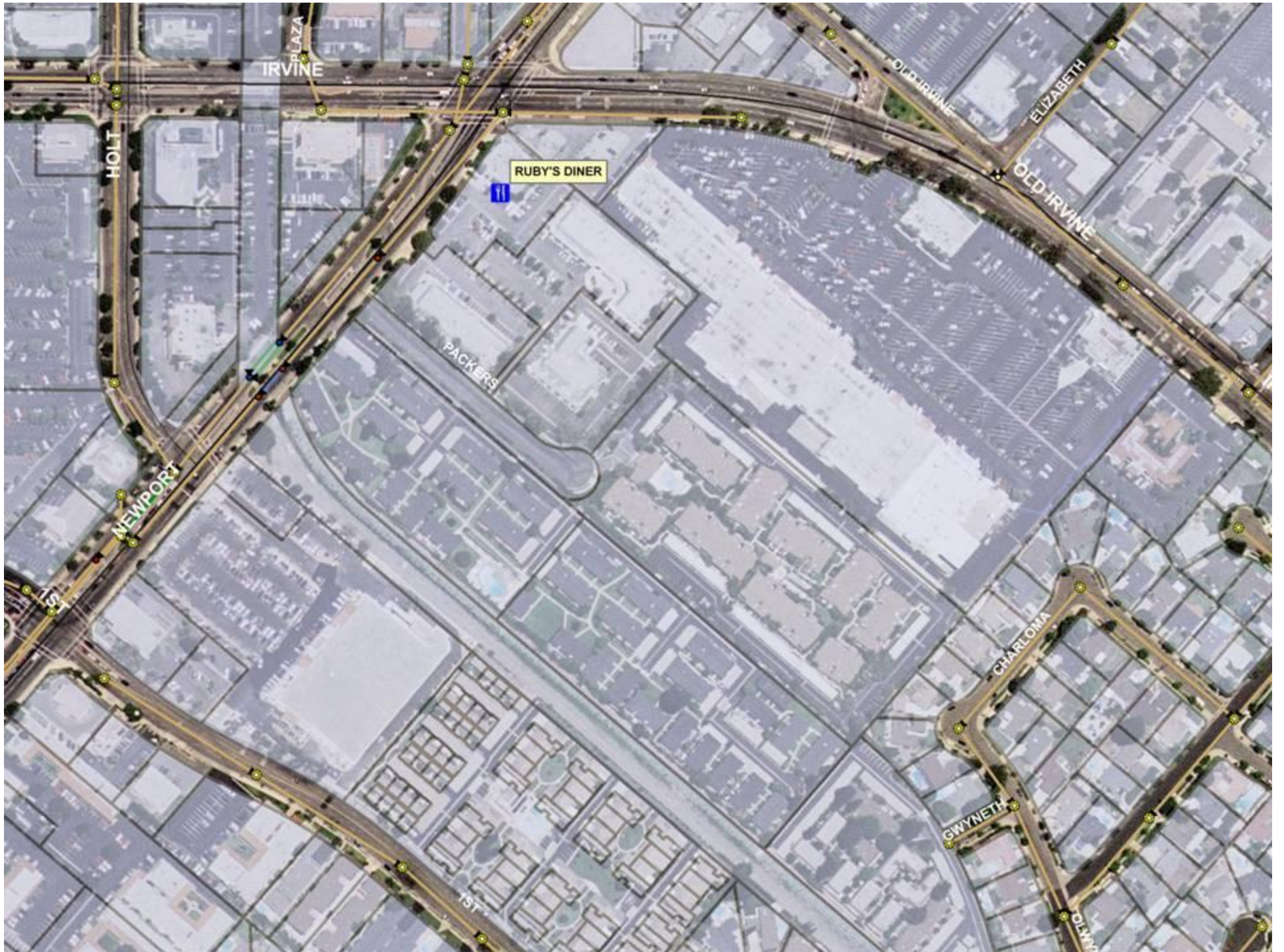
OLD IRVINE

CHARLOIMA

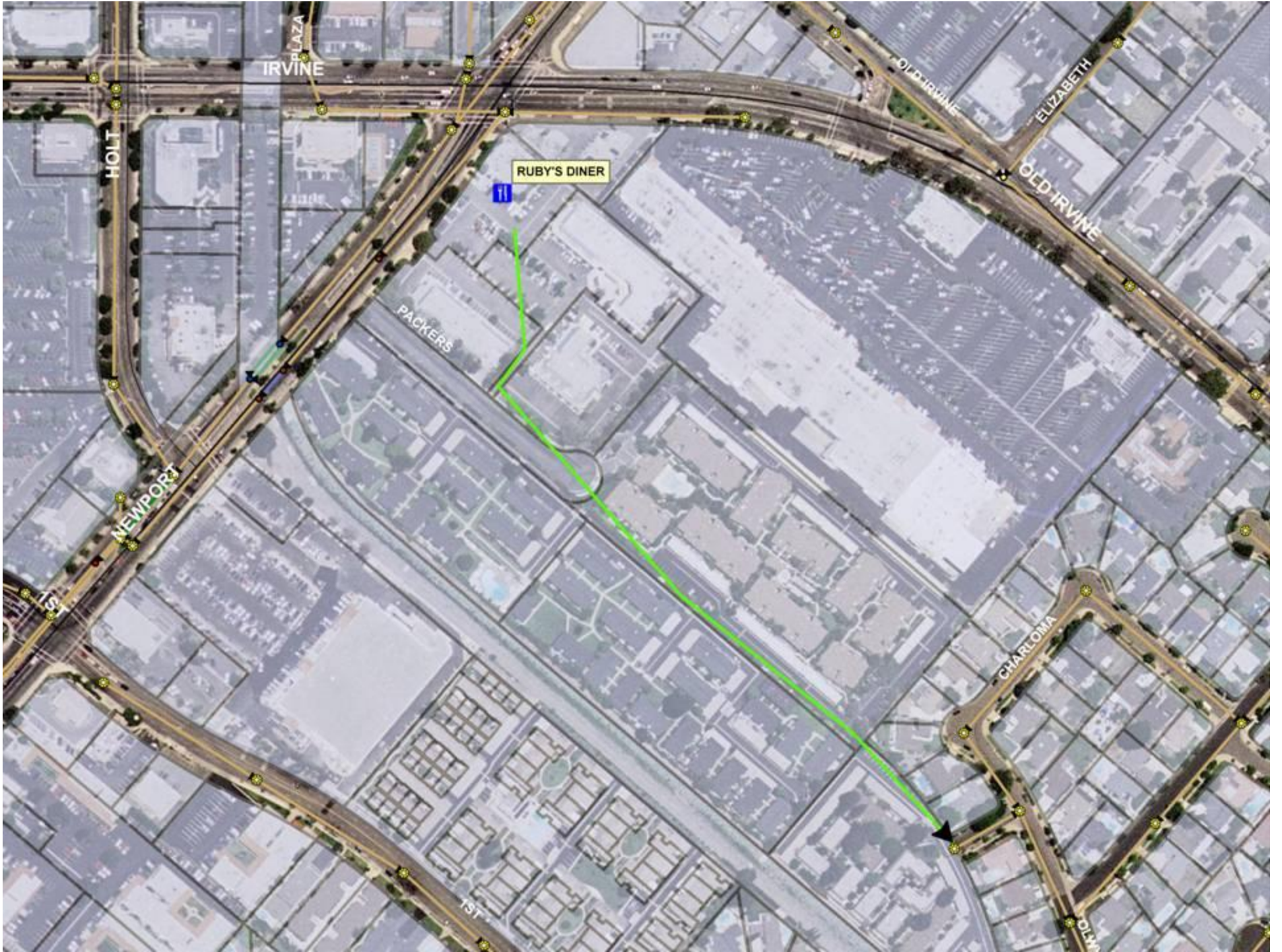
GWYNETH

OLIVE













IRVINE

PLAZA

RUBY'S DINER

PACKERS

HOLT

NEWPORT

OLD IRVINE

ELIZABETH

OLD IRVINE

CHARLOMA

CSUNT20T

1ST

DUNN



# Summary Of Enforcement Events

- Compliance meeting with Ruby's management
- Directive to install Grease Interceptor
- Follow-up to ensure timely installation
- Physical observation of installation
- Modification of FOG permit

# War Story #2: Irvine and 'B' Street





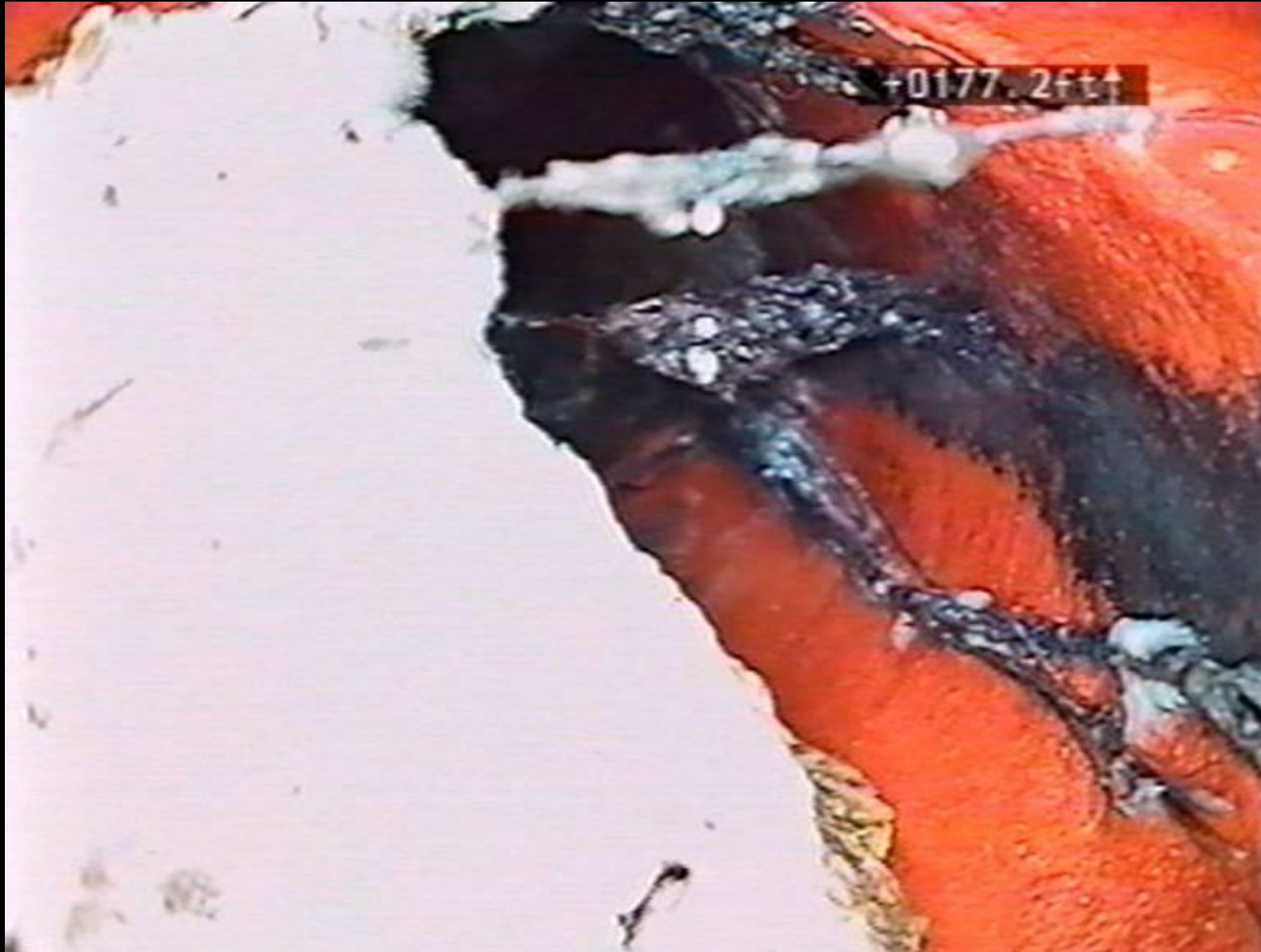








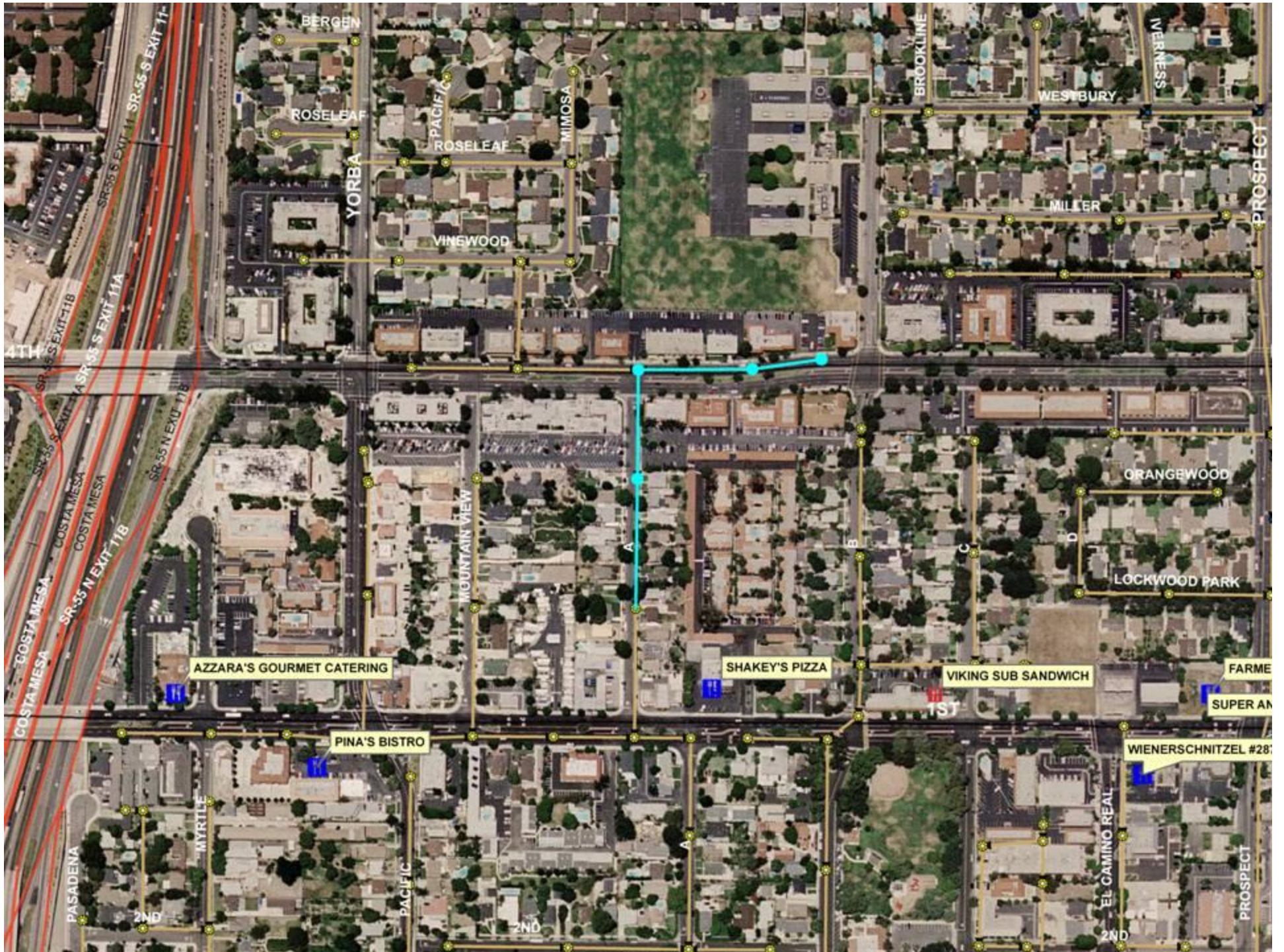
# Picture of House Connection



# Picture of Sewer Line









# How do we control Residential Users??

- Outreach
- Outreach
- Outreach

