



**Matthew Rodriguez**  
Secretary for  
Environmental Protection

# State Water Resources Control Board



**Edmund G. Brown Jr.**  
Governor

## Office of Enforcement

1001 I Street, 16th Floor, Sacramento, California 95814  
P.O. Box 100, Sacramento, California 95812-0100  
(916) 341-5272 ♦ FAX (916) 341-5896 ♦ <http://www.waterboards.ca.gov>

August 2, 2011

**Certified Mail No. 7004-1160-0002-0465-7591**

Mr. Thomas Williams  
Legally Responsible Official  
Ironhouse Sanitary District  
450 Walnut Meadows Drive  
Oakley, California 94561

Dear Mr. Williams:

### **NOTICE OF VIOLATION; COLLECTION SYSTEM REQUIREMENTS; IRONHOUSE SANITARY DISTRICT; CONTRA COSTA COUNTY**

The State Water Resources Control Board's (State Water Board's) Office of Enforcement (OE) conducted a compliance evaluation to determine the Ironhouse Sanitary District's compliance with Water Quality Order No. 2006-0003-DWQ (Sanitary Sewer System Order, hereafter, SSSWDRs)<sup>1</sup> which regulates the operations, maintenance and management of the sanitary sewer collection system to reduce the number of Sanitary Sewer Overflows (SSOs) and the volume of wastewater spilled. The purpose of this letter is to follow up on the list of violations discussed with you during our July 5, 2011 unannounced visit to the Ironhouse Sanitary District (District) to evaluate the District's reporting compliance with the SSSWDRs. A comprehensive audit of the District's sanitary sewer system was not conducted by OE staff. Also included in this letter are our findings based on review of the District's existing Sewer System Management Plan, which include numerous violations that must be corrected and addressed.

### **BACKGROUND**

The SSSWDRs require all public agencies that own or operate a sanitary sewer system comprised of more than one mile of pipes that convey wastewater to a publicly owned treatment facility to apply to the State Water Board for coverage under this Order. Applicable public agencies are required to file a Notice of Intent to Comply with the Terms of the Statewide General Waste Discharge Requirements for Sanitary Sewer Systems (NOI) for each individual sanitary sewer collection system owned or operated by the public agency. The deadline for enrollment was November 2, 2006. Our records indicate that the District filed an NOI with the State Water Board on 10/25/2006 and enrolled "Ironhouse Sanitary District", which was then issued Waste Discharge ID (WDID) #5SSO10970 by the State Water Board.

<sup>1</sup> Available at: <http://www.waterboards.ca.gov/sso/index.html>

**NOTICE OF VIOLATION**

The District has violated the SSSWDRs (Order No. 2006-0003-DWQ) as follows:

<b>VIOLATIONS</b>		
FINDING	RELEATED CITATION(S)	COMMENTS
<b>SANITARY SEWER OVERFLOW REPORTING</b>		
<i>The District failed to provide a total of 10 "No Spill Certifications" on time between 09/02/2007 and 05/01/2011.</i>	SSSWDRs, Amended MRP, A.7	The District must explain why each of the following "No Spill Certifications" were not completed within the time requirements dictated by the Amended MRP (within 30 days after the end of each calendar month): March 2011, February 2011, October 2010, December 2009, March 2009, December 2007, November 2007, October 2007, and September 2007.
<b>SEWER SYSTEM MANAGEMENT PLAN (SSMP): CERTIFICATION</b>		
<i>The District failed to certify its final SSMP on time (457 days late).</i>	SSSWDRs, section D.15	The District must explain why the final SSMP, due to be fully completed and certified in CIWQS by the District on or before August 2, 2009, was not certified until 11/7/2010 (457 days late). (See Attachment)
<i>The District failed to certify the SSMP "Development Plan and Schedule" on time (340 days late).</i>	SSSWDRs, section D.15	The District must explain why these elements were not certified on time. (See Attachment)
<i>The District failed to certify its SSMP "Goal" [section D.13(i)] and "Organization" [section D.13(ii)] on time (340 days late).</i>	SSSWDRs, section D.14-15	The District must explain why these elements were not certified on time. (See Attachment)
<i>The District failed to certify its SSMP "Legal Authority" [section D.13(iii)], "Operation and Maintenance Program" [section D.13(iv)], "Overflow Emergency Response Program" [section D.13(v)], "Design and Performance Provisions" [section D.13(v)], and "Fats, Oils and Grease (FOG) Control Program" [section D.13(vii)] on time (31 days late).</i>	SSSWDRs, section D.15	The District must explain why these elements were not certified on time (See Attachment)

<b>VIOLATIONS</b>		
FINDING	RELATED CITATION(S)	COMMENTS
<i>The District failed to certify its SSMP System Evaluation and Capacity Assurance Plan [section D.13(viii)], Monitoring and Program Modifications [section D.13(ix)], Program Audits [section D.13(x)], and "Communication Program" [section D.13(xi)] on time (457 days late).</i>	SSSWDRs, section D.15	The District must explain why these elements were not certified on time (See Attachment.)
<b>SEWER SYSTEM MANAGEMENT PLAN (SSMP): CONTENTS</b>		
<i>The District's SSMP "Goals" section fails to satisfy the minimum requirements of the SSSWDRs by not including a Plan and Schedule to properly manage, operate, and maintain all parts of the District's sanitary sewer system.</i>	SSSWDRs, D.13(i)	The District must modify the SSMP to include a description of these activities. The District must also explain why these elements were not included in the District's original SSMP.
<i>The District's SSMP "Organizational Structure" section fails to satisfy the minimum requirements of the SSSWDRs by not including the telephone numbers for management, administrative and maintenance positions responsible for implementing the SSMP, including chain of communication for reporting SSOs from receipt of complaint through certification.</i>	SSSWDRs, D.13(ii)(b) and (c)	The District must modify the SSMP to include a description of these activities. The District must also explain why these elements were not included in the District's original SSMP.
<i>The District's SSMP fails to satisfy the minimum requirements of the SSSWDRs for explaining how the District is maintaining an up-to-date map of the sanitary sewer system.</i>	SSSWDRs, D.13(iv)(a)	The District must modify the SSMP to include a description of these activities. The District must also explain why these elements were not included in the District's original SSMP.

VIOLATIONS		
FINDING	RELATED CITATION(S)	COMMENTS
<i>The District's SSMP fails to satisfy the minimum requirements of the SSSWDRs for describing the District's "routine preventative operation and maintenance activities".</i>	SSSWDRs, D.13(iv)(b)	The District must modify the SSMP to include a description of these activities. The District must also explain why these elements were not included in the District's original SSMP.
<i>The District's SSMP fails to satisfy the minimum requirements of the SSSWDRs for describing the District's "rehabilitation and replacement plan" for short-term and long-term actions.</i>	SSSWDRs, D.13(iv)(c)	The District must modify the SSMP to include a description of these activities. The District must also explain why these elements were not included in the District's original SSMP.
<i>The District's SSMP fails to satisfy the minimum requirements of the SSSWDRs for describing the District's Design and Performance Provisions, including design and construction standards, specifications, and procedures undertaken for inspecting and testing new sewers.</i>	SSSWDRs, D.13(v)	The District must modify the SSMP to include a description of these activities. The District must also explain why these elements were not included in the District's original SSMP.
<i>The District's SSMP fails to satisfy the minimum requirements of the SSSWDRs for the overflow emergency response program, including describing the District's program to ensure that all reasonable steps are taken to contain and prevent discharge of wastewater to minimize or correct impacts from SSOs, including accelerated monitoring efforts.</i>	SSSWDRs, D.13(vi)(f)	The District must modify the SSMP to include a description of these activities. The District must also explain why these elements were not included in the District's original SSMP.

<b>VIOLATIONS (cont'd)</b>		
FINDING	RELEATED CITATION(S)	COMMENTS
<b>COLLECTION SYSTEM QUESTIONNAIRE</b>		
<i>The District failed to include an estimate for the total number of lateral connections in the Collection System Questionnaire, field #18.</i>	SSSWDRs, Amended MRP	The District must provide this estimate in CIWQS. (See Attachment.)

<b>AREAS OF CONCERN</b>		
FINDING	RELEATED CITATION(S)	COMMENTS
<b>SEWER SYSTEM MANAGEMENT PLAN (SSMP): CONTENTS</b>		
<i>The "Operation and Maintenance Program" in the District's SSMP erroneously states that "the California Water Resources Board mandates that ISD televise 100% of the sanitary sewer gravity collection system."</i>	N/A	This is not a requirement included in the SSSWDRs and the SSMP should be modified as appropriate to correct this error.
<i>The District's SSMP is deficient in describing details regarding training provided by the District on a regular basis for staff and contractors (if appropriate) regarding sewer system operations and maintenance procedures.</i>	SSSWDRs, D.13(iv)(d)	The District should modify the SSMP to include a description of these activities.
<i>The District's SSMP is deficient in fully describing the District's activities for sewer system evaluation and capacity assurance planning.</i>	SSSWDRs, D.13(viii)	The District should upgrade descriptions in its SSMP with regards to the specific activities and projects to demonstrate how the District is complying with the minimum criteria in "Evaluation" [section D.13(viii)(a)], "Design Criteria" [section D.13(viii)(b)], "Capacity Enhancement Measures" [section D.13(viii)(c)], and "Schedule" [section D.13(viii)(d)]

AREAS OF CONCERN (cont'd)		
FINDING	RELATED CITATION(S)	COMMENTS
<i>The District's SSMP "Monitoring, Measurement and Program Modifications" section should be improved.</i>	SSSWDRs, D.13(ix)	The District should expand this section in its SSMP to demonstrate how the District is identifying, tracking, and monitoring SSO trends and reduction performance.
<i>The District's SSMP "Communication Program" should be improved.</i>	SSSWDRs, D.13(xi)	The District should expand this section in its SSMP to demonstrate how the District is "communicating with the public on a regular basis" regarding the development, implementation and performance of the SSMP.

SUGGESTED ENAHNCEMENTS	
SEWER SYSTEM MANAGEMENT PLAN (SSMP): CONTENTS	
<i>The District's SSMP is poorly organized which makes it difficult for the reader to comprehend the District's sewer system maintenance, operations and management activities.</i>	The District should consider reorganizing the SSMP, including addition of a table of contents to improve its organization and flow of information. Also, older information should be archived in such a manner that the reader is informed about the latest approved information in the document.

Please provide the State Water Board with a certified, written response by **September 9, 2011** that either confirms the correction of each violation(s) or identifies a specific date by which the violation(s) will be corrected. The State Water Board staff needs this information to address any discharges from your sanitary sewer collection system facilities and to assess the environmental impacts of any past discharges into waters of the State.

The Office of Enforcement may pursue an enforcement action for the above violations, including issuance of an Administrative Civil Liability Complaint and/or referral of this matter to the Attorney General's Office or the San Joaquin County District Attorney's Office. Failure to submit the above required response may result in further enforcement action by the Office of Enforcement. If you have any questions, please contact Mr. Jim Fischer, OE Special Investigations Unit, at (916) 341-5548, or by email at <jfischer@waterboards.ca.gov>.

Sincerely,



Mark Bradley, Chief  
Special Investigations Unit  
Office of Enforcement

cc: Ironhouse Sanitary District Board  
450 Walnut Meadows Drive  
Oakley, CA 94561

(via email only)

Wendy Wyels

Central Valley Regional Water Quality Control Board

Julie Macedo, OE-Legal, State Water Board

Leo Sarmiento, OE-SIU, State Water Board

Jim Fischer, OE-SIU, State Water Board

Julie Berrey, OE-SIU, State Water Board

State Water Resources Control Board  
NOTICE OF INTENT

TO COMPLY WITH THE TERMS OF THE STATEWIDE GENERAL WASTE DISCHARGE  
REQUIREMENTS FOR SANITARY SEWER SYSTEMS  
(WATER QUALITY ORDER NO. 2006 - 0003 - DWQ)

I. Notice of Intent (NOI) Status

Mark Only One Item  New Permittee 2.  Change of Information WDID #: 555610970

II. Agency Information

A. Legally Responsible Official <u>Tom Williams</u>				
B. Agency <u>Ironhouse Sanitary District</u>			C. Title <u>General Manager</u>	
D. Mailing Address <u>450 Walnut Meadows Dr.</u>			E. Address (Line 2)	
F. City <u>Oakley</u>		State <u>CA</u>	G. Zip <u>945</u>	H. County <u>Contra Costa</u>
I. Phone <u>925-625-2279</u>		J. FAX <u>925-625-0169</u>		K. Email Address <u>Williamsisd@sbglobal.net</u>
L. Sanitary Sewer System <u>Ironhouse Sanitary District</u>			M. Regional Water Quality Control Board <u>Region 5</u>	
N. Agency Type (check one) 1. <input type="checkbox"/> City 2. <input type="checkbox"/> County 3. <input type="checkbox"/> State 4. <input type="checkbox"/> Federal 5. <input checked="" type="checkbox"/> Special District 6. <input type="checkbox"/> Government Combination				
O. Population of Community Served (check one) <input checked="" type="checkbox"/> Less than 50,000 <input type="checkbox"/> Greater than or equal to 50,000				

III. Billing Information

A. Agency <u>Ironhouse Sanitary District</u>				
B. Contact Person <u>Tom Williams</u>			C. Title	
D. Mailing Address <u>450 Walnut Meadows Dr.</u>			E. Address (Line 2)	
F. City <u>Oakley</u>		State <u>CA</u>	G. Zip <u>94561</u>	H. County <u>Contra Costa</u>
I. Phone <u>925-625-2279</u>		J. FAX <u>925-625-0169</u>		K. Email Address <u>Williamsisd@sbglobal.net</u>

The annual fee, which is required by the California Water Code (section 13260), is based on the daily population served by the sanitary sewer system. Additionally, an ambient water monitoring surcharge of 9 percent is required for each annual fee. The total fee is the sum of the annual fee and ambient water monitoring surcharge. Please see the instructions on completing this NOI for a detailed explanation of the fee structure.

L. Total Fee (check one)

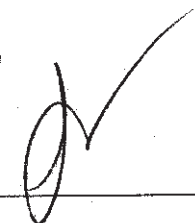
- Population served < 50,000 - total fee submitted is \$ 872.00  
 Population served > 50,000 - total fee submitted is \$ 4,676.00

60003917

A check for the appropriate total fee amount should be made payable to SWRCB and mailed with this completed NOI to the following address:

State Water Board Accounting Office  
P O Box 1888  
Attn: SSO Fees  
Sacramento, CA 95812-1888

SWRCB Tax ID is: 68-029986

#1114  
5267-00  




**IV. Electronic Submittal Authorization**

I, Thomas Williams, certify that I am the legally responsible official for  
principal  
Ironhouse Sanitary District My signature on this form certifies that, I  
agency  
 agree, my California Integrated Water Quality System (CIWQS) user ID and password  
 constitute my electronic signature and any information I indicate I am electronically certifying  
 contains my signature. I understand that I am legally bound, obligated, and responsible by use  
 of my electronic signature as much as by a hand-written signature.

I agree that I will protect my electronic signature from unauthorized use, and that I will contact  
 the State Water Resources Control Board, within 24-hours of discovery, if I suspect that my  
 electronic signature has been lost, stolen, or otherwise compromised. I certify that my  
 electronic signature is for my own use, that I will keep it confidential, and that I will not delegate  
 or share it with any other person.

**V. Certification**

"I certify under penalty of law that this document and all attachments were prepared under my direction or supervision  
 in accordance with a system designed to ensure that qualified personnel properly gather and evaluate the information  
 submitted. Based on my inquiry of the person or persons who manage the system, or those persons directly  
 responsible for gathering the information, to the best of my knowledge and belief, the information submitted is true,  
 accurate, and complete. I am aware that there are significant penalties for submitting false information, including the  
 possibility of fine and imprisonment. Additionally, I certify that the provisions of the Statewide General Waste  
 Discharge Requirements for Sanitary Sewer Systems, including electronic reporting of all sanitary sewer overflows  
 and development and implementation of a sewer system management plan, will be complied with."

A. Printed Name: Thomas Williams  
 B. Title: General Manager  
 C. Signature: Thomas Williams D. Date: 10/25/06

**NOTE: Mail completed and signed form with a check for fee payment to the address below.**

State Water Board Accounting Office  
 P O Box 1888  
 Attn: SSO Fees  
 Sacramento, CA 95832-1888

60003917

## SSO Public Report - Detail Page

Here is the detail page of your SSO public report search for the selected region, responsible agency, or collection system. These results correspond to the following search criteria:

### SEARCH CRITERIA: [\[REFINE SEARCH\]](#)

- Agency ([ironhouse](#))
- Spill Type ([sso\\_cat1\\_2](#))

The table below presents important details for all sewage discharge locations, as submitted through individual SSO reports, which meet the search criteria selected. If data is not shown for a particular field, it means the Enrollee did not provide the information and was not required to do so. To view the entire SSO report for a specific sewage discharge location, please select the corresponding EVENT ID.

### DRILLDOWN HISTORY:

REGION: **5S**

<a href="#">EVENT ID</a>	<a href="#">Region</a>	<a href="#">Responsible Agency</a>	<a href="#">Collection System</a>	<a href="#">SSO Category</a>	<a href="#">Start Date</a>	<a href="#">SSO Address</a>	<a href="#">SSO City</a>	<a href="#">SSO Vol</a>	<a href="#">Vol of SSO Recovered</a>	<a href="#">Vol of SSO Reached Surface Water</a>	<a href="#">SSO Failure Point</a>	<a href="#">WDID</a>
<a href="#">724479</a>	5S	Ironhouse SD	Ironhouse Sanitary District CS	Category 1	2008-08-11 06:50:00.0	6883 Piper Road	Bethel Island	1,500	100	0	Pump station lost program on Sunday August 10, 2008 at 1441 hrs. Upstream pump station continued to pump, laterals started discharging Monday August 11, 2008 at approximately 0650 hrs.	5SSO10970
<a href="#">726417</a>	5S	Ironhouse SD	Ironhouse Sanitary District CS	Category 2	2008-09-16 13:05:00.0	21 Chelsea Court	Oakley	600	600	0	Main	5SSO10970
<a href="#">726473</a>	5S	Ironhouse SD	Ironhouse Sanitary District CS	Category 1	2008-09-16 22:00:00.0	4004 Haley Court	Oakley	1,875	1,875	0	Main	5SSO10970
<a href="#">727687</a>	5S	Ironhouse SD	Ironhouse Sanitary District CS	Category 2	2008-10-08 15:40:00.0	3405 Harbor Road	Bethel Island	100	40	0	Main	5SSO10970
<a href="#">741031</a>	5S	Ironhouse SD	Ironhouse Sanitary District CS	Category 1	2009-07-13 18:00:00.0	0 Bethel Island Road	Bethel Island	5,000	0	5,000	22 degree fitting on a 10" force main. Bethel Island bridge contractor CCMyers Inc. placed 12"x12" timber mats on top of repair brackets that were in place since the spill of 07/13/2009. (See OES Control No. 094982)	5SSO10970
<a href="#">741395</a>	5S	Ironhouse SD	Ironhouse Sanitary District CS	Category 2	2009-07-16 11:00:00.0		Bethel Island	50	50	0	Bethel Island bridge contractor CCMyers Inc. placed 12"x12" timber mats on top of repair brackets	5SSO10970
<a href="#">741399</a>	5S	Ironhouse SD	Ironhouse Sanitary	Category 2	2009-07-16		Bethel Island	50	50	0	Bethel Island bridge contractor CCMyers Inc. placed 12"x12" timber mats on top of repair brackets	5SSO10970

		District CS		11:00:00.0										
<a href="#">743068</a>	5S	Ironhouse SD	Ironhouse Sanitary District CS	Category 2	2009-08-13 16:15:00.0	Bethel Island Road	Bethel Island	20	20	0	Force main flange	5SSO10970	that were in place since the spill of 07/13/2009. (See OES Control No. 094982)	
<a href="#">748179</a>	5S	Ironhouse SD	Ironhouse Sanitary District CS	Category 2	2010-01-04 09:00:00.0	Lakewood Drive	Oakley	360	360	0	Main	5SSO10970		
<a href="#">755634</a>	5S	Ironhouse SD	Ironhouse Sanitary District CS	Category 1	2010-07-28 12:00:00.0	5901 Bethel Island Road	Oakley	2,400	1,200	0	A HDPE factory welded wye split in the welded seam approximately four inches in length.	5SSO10970		
<a href="#">758814</a>	5S	Ironhouse SD	Ironhouse Sanitary District CS	Category 2	2010-11-19 13:00:00.0	Gamay Circle	Oakley	30	30	0	Main	5SSO10970		

The current report was generated with data as of: Tuesday, August 02, 2011



## California Integrated Water Quality System Project (CIWQS)

## COLLECTION SYSTEM OPERATIONAL REPORT

Please see the [Glossary of Terms](#) for explanations of the search results column headings. [More information about the report is found at the bottom of this page.](#)

[\[VIEW PRINTER FRIENDLY VERSION\]](#)

**SEARCH CRITERIA:** [\[REFINE SEARCH\]](#) [\[NEW SEARCH\]](#) [\[GLOSSARY\]](#)

Date Range: Start\_Date (09/02/2007) End\_Date (08/02/2011)

**DRILLDOWN HISTORY:** [\[GO BACK TO LISTING OF COLLECTION SYSTEMS\]](#)

Ironhouse Sanitary District CS

Agency: Ironhouse SD

## General Information



<u>Region</u>	<u>Place ID</u>	<u>Place Name</u>	<u>CS Category</u>	<u>Place Address</u>	<u>Place County</u>
5S	630762	Ironhouse Sanitary District CS	Municipal	Oakley, CA, 94561	Contra Costa

## Collection System Spill Summary

Operational Indices: Ironhouse Sanitary District CS

Spill Rate Indice (#spills/100mi/yr)						
	Category 1			Category 2		
	Mainlines	Laterals	Not Specified	Mainlines	Laterals	Not Specified
Ironhouse Sanitary District CS	0.16	N/A	0.47	0.62	N/A	0.47
State - Municipal - Average	<a href="#">1.69</a>	N/A	<a href="#">2.14</a>	<a href="#">3.46</a>	N/A	<a href="#">3.47</a>
Region - Municipal - Average	<a href="#">1.79</a>	N/A	<a href="#">1.16</a>	<a href="#">4.64</a>	N/A	<a href="#">3.2</a>

Net Volume Spills Indice (Net Vol in gallons/1000 Capita/yr)						
	Category 1			Category 2		
	Mainlines	Laterals	Not Specified	Mainlines	Laterals	Not Specified
Ironhouse Sanitary District CS	0.0	N/A	54.64	0.43	N/A	0.0
State - Municipal - Average	<a href="#">629.74</a>	N/A	<a href="#">2295.14</a>	<a href="#">9.22</a>	N/A	<a href="#">11.71</a>

Region - Municipal - Average	<a href="#">461.73</a>	N/A	<a href="#">3461.47</a>	<a href="#">50.15</a>	N/A	<a href="#">12.65</a>
------------------------------	------------------------	-----	-------------------------	-----------------------	-----	-----------------------

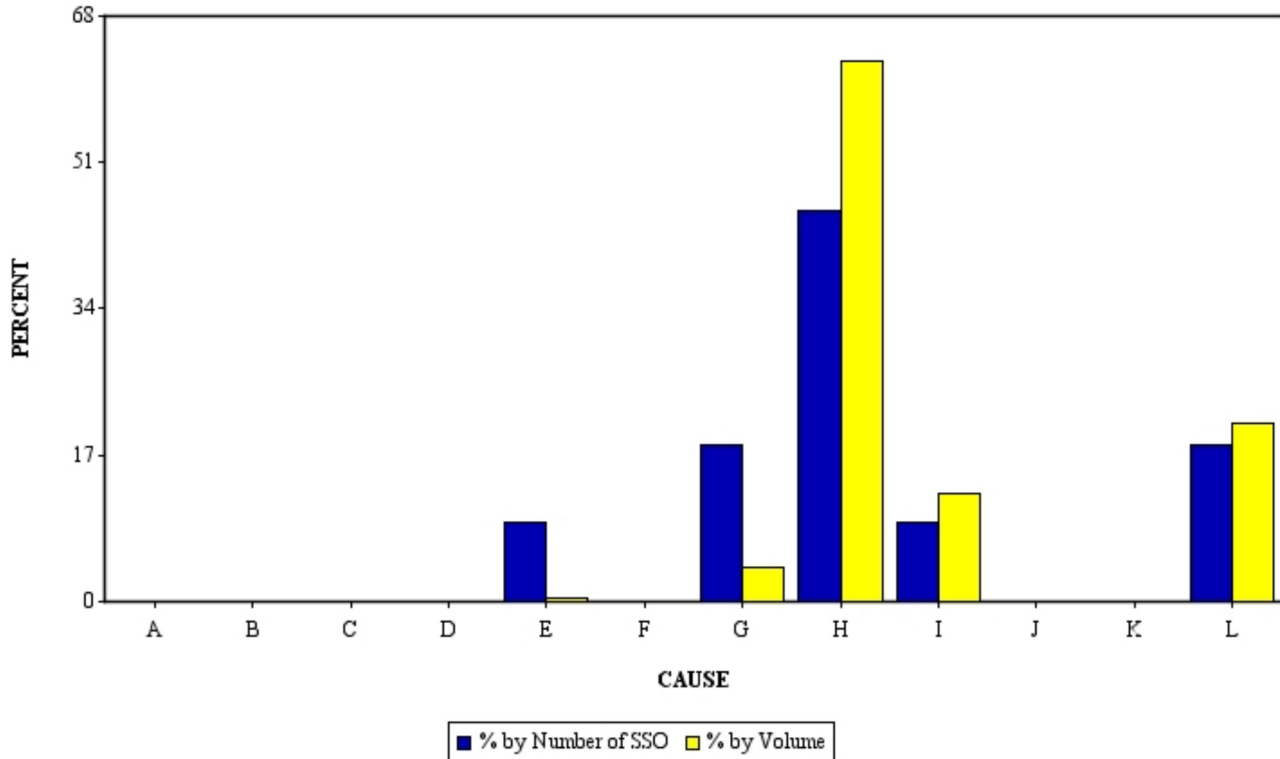
**Note:** Click on hyperlinks to get comparison charts for CS, Region, and State grouped by 'Miles Of Pipe'.

- (1) The number of Category 1 and 2 SSOs resulting from a failure in the Enrollee sewer system per 100 miles sewer system owned by the Enrollee per year.
- (2) Net Volume (volume spilled minus volume recovered) of SSOs, for which the reporting Enrollee is responsible, per capita (i.e. the population served by your agency's sanitary sewer system), per year.
- (3) Value calculated using miles of force mains and other pressure systems and miles of gravity sewers the agency is responsible for.
- (4) Value calculated using miles of laterals the agency is responsible for (Lower Only, UpperLower). For collection systems with no lateral responsibility a N/A is shown.
- (5) Value Calculated using total miles of collection system pipe the agency is responsible for.
- (6) Comparison made between similar collection systems type (e.g. municipal) and lateral responsibility for the entire state over the selected time period. Comparison indices are calculated for all similar collection systems and averaged for comparison.
- (7) Comparison made between similar collection systems type (e.g. Municipal) and lateral responsibility for collection systems in same region (e.g. Region 5S). Collection system indices are calculated for all similar collection systems and averaged for comparison. For airport, hospital, marinas, military, park, port, prison, school, and other collection systems facilities, only state comparison is shown.
- (8) For Criteria used and term definitions refer to the SSO Glossary of Terms.

## Percentage of total Number and Volume of SSOs by Spill Cause

Collection System: Ironhouse Sanitary District CS

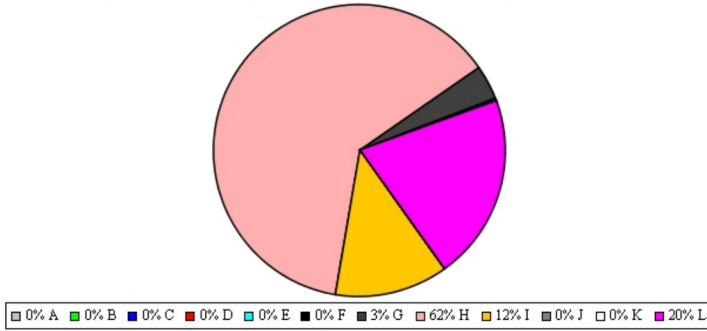
**A=Debris-General, B=Debris-Rags, C=Debris, D=Flow exceeded capacity, E=Grease deposition(FOG), F=Operator error, G=Other, H=Pipe structural problem/failure, I=Pump station failure, J=Rainfall exceeded design, K=Root intrusion, L=Vandalism**



## Percentage of total Volume of SSOs by Spill Cause

Ironhouse Sanitary District CS

A=Debris-General, B=Debri-Rags, C=Debris, D=Flow exceeded capacity, E=Grease deposition(FOG), F=Operator error, G=Other, H=Pipe structural problem/failure, I=Pump station failure, J=Rainfall exceeded design, K=Root intrusion, L=Vandalism



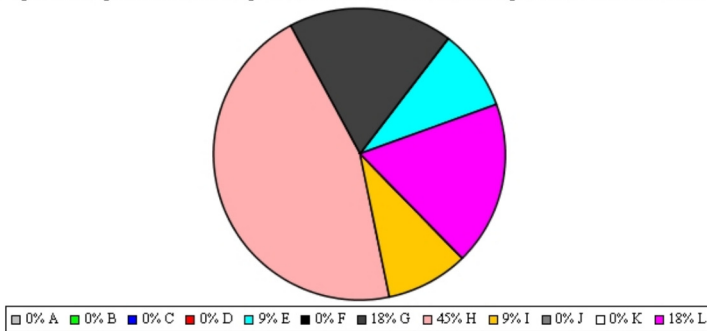
Region 5S

State of California

## Percentage of total Number of SSOs by Spill Cause

Ironhouse Sanitary District CS

A=Debris-General, B=Debri-Rags, C=Debris, D=Flow exceeded capacity, E=Grease deposition(FOG), F=Operator error, G=Other, H=Pipe structural problem/failure, I=Pump station failure, J=Rainfall exceeded design, K=Root intrusion, L=Vandalism



---

## Collection System Questionnaire Data(\*)

### Collection System Information: Ironhouse Sanitary District CS

Status	Active
Last Updated On	2010-12-07 10:44:28.0
Population Served	35,500
Miles of Force Main	12
Miles of Gravity Sewer	152
Miles of Laterals	74
Portion of Laterals Responsible	none
Miles of Laterals Responsible	
Number of Service Lateral Connection	0
Sewer Constructed 2000 Current	16
Sewer Constructed 1980 1999	65
Sewer Constructed 1960 1979	10
Sewer Constructed 1940 1959	9
Sewer Constructed 1920 1939	0
Sewer Constructed 1900 1919	0
Sewer Constructed Before 1900	0
Inaccessible Sewer (Miles)	0
Sewer Clean Production (Miles/Yr)	30
Gravity Sewer Inspection (Miles/Yr)	25

(\*) The information presented above was provided by the Enrollee in the Collection System Questionnaire. Enrollees are required to update the questionnaire information at least once a year; therefore, the information presented above may not be the most current.

---

## Sewer System Management Plan (SSMP) Completion (\*)

### SSMP Information: Ironhouse Sanitary District CS

Task and Associated Section	Completed
Development Plan and Schedule	Yes
Section I - Goal	Yes
Section II - Organization	Yes
Section III - Legal Authority	Yes
Section IV - Operation & Maintenance Program	Yes
Section V - Design & Performance Provisions	Yes
Section VI - Overflow Emergency Response Plan	Yes
Section VII - FOG Control Program	Yes
Section VIII - System Evaluation & Capacity Assurance Plan	Yes
Section IX - Monitoring, Measurement, and Program Modifications	Yes
Section X - SSMP Program Audits	Yes
Section XI - Communication Program	Yes
Complete SSMP Implementation	Yes

(\*) Under the Statewide General WDRs for Sanitary Sewer Systems, WQO No. 2006-0003, enrollees are required to develop and implement a written Sewer system Management Plan (SSMP) and must make it publicly available. The SSMP must be approved by the deadlines in the SSMP Time Schedule presented in the Sanitary Sewer Systems WDR.

---

### Additional Information:

- Data used for the Operational report is reported by the enrollees through the CIWQS (California Integrated Water Quality

System) SSO module.

- Indices are calculated for the date range specified ( default is past 4 months ) and using data available since reporting was required for all enrollees as specified in the Sanitary Sewer Systems WDR. Reporting was required to begin for Regions 4,8,9 on 1/2/2007, Regions 1,2,3 on 5/2/2007, and, Regions 5,6,7 on 9/2/2007.
- Comparisons are made between similar collection systems type (e.g. Municipal), and lateral responsibility for the entire state and region. Indices are calculated for all similar collection systems and averaged for comparison.
- Category 1 spills are required to be fully certified 15 calendar days after SSO response conclusion and Category 2 spills are required to be fully certified 30 Calendar days after end of calendar month which SSO occurred. Therefore, spill records for the past approximately 60 days may be incomplete.
- Average Number of Spills per 100 miles: Measures the number of sewer overflows per 100 miles of sewer lines. Notice that these indices are strongly influenced by the length of collection system owned by the enrollee.
  - For instance, an enrollee that owns and operates a collection system of one (1) mile in length having only one (1) spill (analyzing data for ONE year) will have a Operational indice of 100.0 spills/100mi/yr. On the other hand, an enrollee that owns and operates a collection system of one hundred (100) miles in length having only one (1) spill (analyzing data for ONE year) will have a Operational indice of 1.0 spills/100mi/yr.
- Average Net Volume (volume spilled minus volume recovered) of Spills per Capita: Measures the volume in gallons of SSOs, for which the reporting Enrollee is responsible, per capita ( the population served by your agency's sanitary sewer system). Where the volume recovered is greater than the volume spilled, the net volume will be considered to be zero.
- The "agency" or Enrollee listed on a SSO report is responsible for the data presented in this report and should be contacted directly for questions related to their Data.
- More information on the Sanitary Sewer Overflow Reduction program is available at: [http://www.waterboards.ca.gov/water\\_issues/programs/sso/index.shtml](http://www.waterboards.ca.gov/water_issues/programs/sso/index.shtml)
- The Sanitary Sewer Overflows Incident Map is available at: [http://www.waterboards.ca.gov/water\\_issues/programs/sso/sso\\_map/sso\\_pub.shtml](http://www.waterboards.ca.gov/water_issues/programs/sso/sso_map/sso_pub.shtml)
- The Interactive SSO report: [https://ciwqs.waterboards.ca.gov/ciwqs/readOnly/PublicReportSSOServlet?reportAction=criteria&reportId=sso\\_main](https://ciwqs.waterboards.ca.gov/ciwqs/readOnly/PublicReportSSOServlet?reportAction=criteria&reportId=sso_main)

The current report was generated with data as of: Monday, August 01, 2011  
 Regional Boards are in the process of entering backlogged data.  
 As a result, data may be incomplete.  
 Reports are constructed from all entered data as of the close of business the previous day.

[Back to Main Page](#) | [Back to Top of Page](#)

[Conditions of Use](#) | [Privacy Policy](#)  
 Copyright © 2011 State of California

The Board is one of six boards, departments, and offices under the umbrella of the California Environmental Protection Agency.  
[Cal/EPA](#) | [ARB](#) | [DPR](#) | [DTSC](#) | [OEHHA](#) | [SWRCB](#)





[Menu](#) | [Help](#) | [Log out](#)

Navigate to:   
 You are logged-in as: jfischer . If this account does not belong to you, please log out.

**SSO - SSO No Spill Certification Search** [?](#) [SSO Menu](#)

Regional Water Board:

Agency:

Sanitary Sewer System:

WDID:

Enter any search criteria and click "Search".

Confirmation Number:

For the Month/Year From:  - Select Month -  Year:

For the Month/Year To:  - Select Month -  Year:

Sanitary Sewer System:

Agency:

Regional Water Board:

**Search Results:**

[Previous](#) | 1-10 of 41 |  | [Next 10](#)

Confirmation Number	Certification for the Month of	Certified By	Entered Date/Time	Sanitary Sewer System	Agency	Regional Board
2293155	May 2011	Marc Haefke	2011-6-30.15.37. 10. 0	Ironhouse Sanitary District CS	Ironhouse SD	5S
2287714	April 2011	Marc Haefke	2011-5-17.10.10. 11. 0	Ironhouse Sanitary District CS	Ironhouse SD	5S
2287712	March 2011	Marc Haefke	2011-5-17.10.9. 40. 0	Ironhouse Sanitary District CS	Ironhouse SD	5S
2287710	February 2011	Marc Haefke	2011-5-17.10.9. 0. 0	Ironhouse Sanitary District CS	Ironhouse SD	5S
2277833	January 2011	Marc Haefke	2011-2-28.15.24. 22. 0	Ironhouse Sanitary District CS	Ironhouse SD	5S
2271321	December 2010	Marc Haefke	2011-1-6.16.17. 9. 0	Ironhouse Sanitary District CS	Ironhouse SD	5S
2271320	October 2010	Marc Haefke	2011-1-6.16.16. 21. 0	Ironhouse Sanitary District CS	Ironhouse SD	5S
2261415	September 2010	Marc Haefke	2010-10-25.14.30. 4. 0	Ironhouse Sanitary District CS	Ironhouse SD	5S
2257428	August 2010	Tom Williams	2010-9-21.15.29. 40. 0	Ironhouse Sanitary District CS	Ironhouse SD	5S
2248210	June 2010	Tom Williams	2010-7-9.16.40. 3. 0	Ironhouse Sanitary District CS	Ironhouse SD	5S



[Menu](#) | [Help](#) | [Log out](#)

Navigate to:   
 You are logged-in as: jfischer . If this account does not belong to you, please log out.

**SSO - SSO No Spill Certification Search** ? | [SSO Menu](#)

Regional Water Board:

Agency:

Sanitary Sewer System:

WDID:

Enter any search criteria and click "Search".

Confirmation Number:

For the Month/Year From:  - Select Month -  Year:

For the Month/Year To:  - Select Month -  Year:

Sanitary Sewer System:

Agency:

Regional Water Board:

**Search Results:**

[Previous 10](#) | 11-20 of 41 | [Next 10](#)

Confirmation Number	Certification for the Month of	Certified By	Entered Date/Time	Sanitary Sewer System	Agency	Regional Board
2248211	May 2010	Tom Williams	2010-7-9.16.40. 46. 0	Ironhouse Sanitary District CS	Ironhouse SD	5S
2241984	April 2010	Tom Williams	2010-5-24.9.41. 9. 0	Ironhouse Sanitary District CS	Ironhouse SD	5S
2235968	March 2010	Tom Williams	2010-4-2.9.19. 30. 0	Ironhouse Sanitary District CS	Ironhouse SD	5S
2231875	February 2010	Tom Williams	2010-3-2.11.30. 8. 0	Ironhouse Sanitary District CS	Ironhouse SD	5S
2228089	January 2010	Tom Williams	2010-2-2.9.49. 46. 0	Ironhouse Sanitary District CS	Ironhouse SD	5S
2222928	December 2009	Tom Williams	2010-1-8.10.11. 24. 0	Ironhouse Sanitary District CS	Ironhouse SD	5S
2228088	December 2009	Tom Williams	2010-2-2.9.49. 32. 0	Ironhouse Sanitary District CS	Ironhouse SD	5S
2216170	November 2009	Tom Williams	2009-12-2.9.47. 31. 0	Ironhouse Sanitary District CS	Ironhouse SD	5S
2212490	October 2009	Tom Williams	2009-11-5.14.1. 58. 0	Ironhouse Sanitary District CS	Ironhouse SD	5S
2206767	September 2009	Tom Williams	2009-10-5.16.40. 51. 0	Ironhouse Sanitary District CS	Ironhouse SD	5S



[Menu](#) | [Help](#) | [Log out](#)

Navigate to:    
 You are logged-in as: jfischer . If this account does not belong to you, please log out.

**SSO - SSO No Spill Certification Search** ? | [SSO Menu](#)

Regional Water Board:

Agency:

Sanitary Sewer System:

WDID:

Enter any search criteria and click "Search".

Confirmation Number:

For the Month/Year From:  - Select Month -  Year:

For the Month/Year To:  - Select Month -  Year:

Sanitary Sewer System:

Agency:

Regional Water Board:

**Search Results:**

[Previous 10](#) | 21-30 of 41 | [Next 10](#)

Confirmation Number	Certification for the Month of	Certified By	Entered Date/Time	Sanitary Sewer System	Agency	Regional Board
2185313	June 2009	Tom Williams	2009-7-8.11.43. 54. 0	Ironhouse Sanitary District CS	Ironhouse SD	5S
830546	May 2009	Tom Williams	2009-6-1.14.20. 13. 0	Ironhouse Sanitary District CS	Ironhouse SD	5S
825242	April 2009	Tom Williams	2009-5-4.16.56. 19. 0	Ironhouse Sanitary District CS	Ironhouse SD	5S
830543	April 2009	Tom Williams	2009-6-1.14.16. 24. 0	Ironhouse Sanitary District CS	Ironhouse SD	5S
830547	March 2009	Tom Williams	2009-6-1.14.20. 50. 0	Ironhouse Sanitary District CS	Ironhouse SD	5S
817209	February 2009	Tom Williams	2009-3-4.8.31. 9. 0	Ironhouse Sanitary District CS	Ironhouse SD	5S
813438	January 2009	Tom Williams	2009-2-2.16.40. 26. 0	Ironhouse Sanitary District CS	Ironhouse SD	5S
809708	December 2008	Tom Williams	2009-1-2.16.39. 20. 0	Ironhouse Sanitary District CS	Ironhouse SD	5S
806595	November 2008	Tom Williams	2008-12-9.15.38. 32. 0	Ironhouse Sanitary District CS	Ironhouse SD	5S
789804	July 2008	Tom Williams	2008-8-5.10.29. 45. 0	Ironhouse Sanitary District CS	Ironhouse SD	5S



[Menu](#) | [Help](#) | [Log out](#)

Navigate to:   
 You are logged-in as: jfischer . If this account does not belong to you, please log out.

**SSO - SSO No Spill Certification Search** [?](#) [SSO Menu](#)

Regional Water Board:

Agency:

Sanitary Sewer System:

WDID:

Enter any search criteria and click "Search".

Confirmation Number:

For the Month/Year From:  - Select Month -  Year:

For the Month/Year To:  - Select Month -  Year:

Sanitary Sewer System:

Agency:

Regional Water Board:

**Search Results:**

[Previous 10](#)  [Next 1](#)

Confirmation Number	Certification for the Month of	Certified By	Entered Date/Time	Sanitary Sewer System	Agency	Regional Board
779072	June 2008	Tom Williams	2008-7-3.11.42. 52. 0	Ironhouse Sanitary District CS	Ironhouse SD	5S
757311	May 2008	Tom Williams	2008-6-2.16.2. 3. 0	Ironhouse Sanitary District CS	Ironhouse SD	5S
749669	April 2008	Tom Williams	2008-5-7.10.11. 53. 0	Ironhouse Sanitary District CS	Ironhouse SD	5S
749670	April 2008	Tom Williams	2008-5-7.10.12. 17. 0	Ironhouse Sanitary District CS	Ironhouse SD	5S
743214	March 2008	Tom Williams	2008-4-9.14.28. 11. 0	Ironhouse Sanitary District CS	Ironhouse SD	5S
734375	February 2008	Tom Williams	2008-3-4.15.20. 24. 0	Ironhouse Sanitary District CS	Ironhouse SD	5S
726028	January 2008	Tom Williams	2008-2-11.11.50. 23. 0	Ironhouse Sanitary District CS	Ironhouse SD	5S
793522	December 2007	Tom Williams	2008-8-26.15.50. 16. 0	Ironhouse Sanitary District CS	Ironhouse SD	5S
793523	November 2007	Tom Williams	2008-8-26.15.50. 33. 0	Ironhouse Sanitary District CS	Ironhouse SD	5S
793524	October 2007	Tom Williams	2008-8-26.15.50. 44. 0	Ironhouse Sanitary District CS	Ironhouse SD	5S



[Menu](#) | [Help](#) | [Log out](#)

Navigate to:   
 You are logged-in as: jfischer . If this account does not belong to you, please log out.

**SSO - SSO No Spill Certification Search** [?](#) [SSO Menu](#)

Regional Water Board:

Agency:

Sanitary Sewer System:

WDID:

Enter any search criteria and click "Search".

Confirmation Number:

For the Month/Year From:  Year:

For the Month/Year To:  Year:

Sanitary Sewer System:

Agency:

Regional Water Board:

**Search Results:**

[Previous 10](#)  [Next](#)

Confirmation Number	Certification for the Month of	Certified By	Entered Date/Time	Sanitary Sewer System	Agency	Regional Board
2269094	September 2007	Marc Haefke	2010-12-13.15.32. 30. 0	Ironhouse Sanitary District CS	Ironhouse SD	5S



[Menu](#) | [Help](#) | [Log out](#)

Navigate to:    
 You are logged-in as: jfischer . If this account does not belong to you, please log out.

**SSO - Sewer System Management Plan (SSMP)** [?](#) [SSO Menu](#)

Regional Water Board: 5S  
 Agency: Ironhouse SD  
 Sanitary Sewer System: Ironhouse Sanitary District CS  
 WDID: 5SSO10970

Last Updated:

SSMP Element	Certification Date
Development Plan and Schedule	<input type="text" value="10/07/2008"/> (Date Format: MM/DD/YYYY)
Section I - Goal	<input type="text" value="10/07/2008"/> (Date Format: MM/DD/YYYY)
Section II - Organization	<input type="text" value="10/07/2008"/> (Date Format: MM/DD/YYYY)
Section III - Legal Authority	<input type="text" value="06/02/2009"/> (Date Format: MM/DD/YYYY)
Section IV - Operation & Maintenance Program	<input type="text" value="06/02/2009"/> (Date Format: MM/DD/YYYY)
Section V - Design & Performance Provisions	<input type="text" value="06/02/2009"/> (Date Format: MM/DD/YYYY)
Section VI - Overflow Emergency Response Plan	<input type="text" value="06/02/2009"/> (Date Format: MM/DD/YYYY)
Section VII - FOG Control Program	<input type="text" value="06/02/2009"/> (Date Format: MM/DD/YYYY)
Section VIII - System Evaluation & Capacity Assurance Plan	<input type="text" value="11/02/2010"/> (Date Format: MM/DD/YYYY)
Section IX - Monitoring, Measurement, and Program Modifications	<input type="text" value="11/02/2010"/> (Date Format: MM/DD/YYYY)
Section X - SSMP Program Audits	<input type="text" value="11/02/2010"/> (Date Format: MM/DD/YYYY)
Section XI - Communication Program	<input type="text" value="11/02/2010"/> (Date Format: MM/DD/YYYY)
Complete SSMP Implementation	<input type="text" value="11/02/2010"/> (Date Format: MM/DD/YYYY)
Note: 'Complete SSMP Implementation' is only available for input only if all its above sections filled.	
Note: The Certification Note and Certified By fields disappear after certifying your SSMP. Previous entries can be seen on the Historic SSMP information screen.	
Certification Note:	<input type="text"/>
5-Year Update	<input type="text"/> (Date Format: MM/DD/YYYY)

[Historic](#)



[Menu](#) | [Help](#) | [Log out](#)

Navigate to:    
 You are logged-in as: jfischer . If this account does not belong to you, please log out.

**SSO - Questionnaire** ? | [SSO Menu](#)

**Regional Water Board:** 5S  
**Agency:** Ironhouse SD  
**Sanitary Sewer System:** Ironhouse Sanitary District CS  
**WDID:** 5SSO10970

Collection System Questionnaire

Save

Note: All questions are required to be answered. Enter N/A for questions that do not apply.

Last successfully updated: 2010-12-07

**Collection System Questionnaire** ?

**1) Sanitary Sewer System Category:**

**2) What is the population served by your agency's sanitary sewer system?**

**3) What is your current annual operation and maintenance budget for sanitary sewer system facilities?**

**4) What is your current annual capital expenditure budget for sanitary sewer system facilities?**

*Please identify the total number of employees (technical and mechanical) for your agency's sanitary sewer system (including pump station operations) working within the different classifications listed below.*

**5) Entry Level ( Less than 2 years experience)**  
 Number of agency employees?

**6) Journey Level ( Greater than or equal 2 years experience)**  
 Number of agency employees?

**7) Supervisory Level**  
 Number of agency employees?

**8) Managerial Level**  
 Number of agency employees?

*Please identify the total number of employees who hold CWEA Certification for Collection System Maintenance and/or Plant Maintenance-Includes Mechanical Technologist and Electrical/Instrumentation for your agency's sanitary sewer system (including pump station operations) for the various Certificates and Grades levels listed below.*

**9) Grade I**

Number of certified (Grade I Collection System Maintenance) agency employees:

Number of certified (Grade I Plant Maintenance Technologist) agency employees?

**10) Grade II**

Number of certified (Grade II Collection System Maintenance) agency employees:

Number of certified (Grade II Electrical/Instrumentation Technologist) agency employees:

Number of certified (Grade II Mechanical Technologist) agency employees:

**11) Grade III**

Number of certified (Grade III Collection System Maintenance) agency employees:

Number of certified (Grade III Electrical/Instrumentation Technologist) agency employees:

Number of certified (Grade III Mechanical Technologist) agency employees:

**12) Grade IV**

Number of certified (Grade IV Collection System Maintenance) agency employees:

Number of certified (Grade IV Electrical/Instrumentation Technologist) agency employees:

Number of certified (Grade IV Mechanical Technologist) agency employees:

**13) How many miles of forced mains and other pressure systems?**

**14) How many miles of gravity sewers?**

**15) Estimated total miles of laterals (upper and lower)?**

**16) Which portion of laterals is your agency responsible for?**

(If the answer of question-15 is None, no need to answer for question-16)

**17) Estimated total miles of laterals your agency is responsible for?**

**18) Number of service lateral connections?**

**19) Approximately, what percentage of your sanitary sewer system was constructed between the years of:**  
(note: total must sum to 100%)

%, 2000 - Present

<input type="text" value="65"/>	%, 1980 - 1999	
<input type="text" value="10"/>	%, 1960 - 1979	
<input type="text" value="9"/>	%, 1940 - 1959	
<input type="text" value="0"/>	%, 1920 - 1939	
<input type="text" value="0"/>	%, 1900 - 1919	
<input type="text" value="0"/>	%, Before 1900	
<b>20) Estimated total miles of your sanitary sewer system not accessible by vehicle?</b>		<input type="text" value="0"/>
<b>21) What is your total gravity sewer system cleaning production in miles/year?</b>		<input type="text" value="30"/>
<b>22) What is your total gravity sewer system condition inspection (e.g., CCTV) production in miles/year?</b>		<input type="text" value="25"/>
<input type="button" value="Save"/>	<i>Note: All questions are required to be answered.</i>	

[Export Questionnaire History To Excel](#)

© 2010 State of California. [Conditions of Use](#) [Privacy Policy](#)