

Electronic Sanitary Sewer Service Area Boundary Map Submission

- ▶ Compliance with
General Order 2022-
0103-DWQ –
Specification 5.14

Michael Flores, HDR

Anders Burvall, HDR

May 21, 2025



STATE WATER RESOURCES CONTROL BOARD

1001 I Street, Sacramento, California 95814

ORDER WQ 2022-0103-DWQ

**STATEWIDE WASTE DISCHARGE REQUIREMENTS
GENERAL ORDER FOR SANITARY SEWER SYSTEMS**

This Order was adopted by the State Water Resources Control Board on December 6, 2022.

This Order shall become effective **180 days after the Adoption Date of this General Order**, on June 5, 2023.

The Enrollee shall comply with the requirements of this Order upon the Effective Date of this General Order.

Specification

Attachment E1 – Section 3.8

5.14. Electronic Sanitary Sewer System Service Area Boundary Map

For continuing enrollees, starting on July 1, 2025, and no later than December 31, 2025:

For new enrollees – no earlier than July 1, 2025, or within 12 months of the Application for Enrollment approval date, whichever date is later:

The Legally Responsible Official shall submit, to the State Water Board, geospatial data detailing the locations of the Enrollee's sanitary sewer system service area boundary, per the required content and specifications in section 3.8 (Electronic Sanitary Sewer System Service Area Boundary Map) of Attachment E1 of this General Order, for each system identified by a WDID number.

An Enrollee of a disadvantaged community that may need assistance developing an electronic map to comply with this requirement, may contact State Water Board staff for assistance at SanitarySewer@waterboards.ca.gov.



3.8. Electronic Sanitary Sewer System Service Area Boundary Map

The Legally Responsible Official shall submit, to the State Water Board, an up-to-date electronic spatial map of its sewer system service area boundaries. The map must be in accordance with section 5.14 (Electronic Sanitary Sewer System Service Area Boundary Map) of this General Order and the specification provided on the statewide Sanitary Sewer Systems program website. The map must include the location of wastewater treatment facility(ies) that treats the sewer system waste, if in the same sewer service boundary.

By the Effective Date of this General Order, specifications for the electronic sanitary sewer service area boundary map format will be provided on the statewide Sanitary Sewer Systems Order program website.

Information on Formatting Requirements

State Water Resources Control Board

Board

Programs

Drinking Water

Water Quality

Water Rights

Notices

Water Boards

Search

Home

Water Issues

Programs

Sanitary Sewer Systems General Order

Sanitary Sewer Systems General Order

Sewage is untreated or partially treated domestic, municipal, commercial and/or industrial waste (including sewage sludge), and any mixture of these wastes with inflow or infiltration of stormwater or groundwater, conveyed in a sanitary sewer system. A spill is a discharge of sewage from any portion of a sanitary sewer system due to a sanitary sewer system spill, operational failure, and/or infrastructure failure. Sewage and its associated wastewater spilled from a sanitary sewer system may threaten public health, beneficial uses of waters of the State, and the environment.

General Order Information

To provide a consistent, statewide regulatory approach to address sanitary sewer spills, the State Water Board adopted Statewide General Waste Discharge Requirements for Sanitary Sewer Systems, Water Quality Order No. 2022-0103-DWQ (Sanitary Sewer Systems General Order) on December 6, 2022. The Sanitary Sewer Systems General Order requires public agencies that own or operate sanitary sewer systems to develop and implement sewer system management plans and report all sanitary sewer spills to the State Water Board's online California Integrated Water Quality System (CIWQS) Sanitary Sewer System Database.

- Statewide Sanitary Sewer Systems General Order – Effective June 5, 2023

Quick Links

- Electronic Sanitary Sewer System Service Area Boundary Map Specifications
- Sewer System Management Plan and Program Audit Due Dates Look Up (search by WDID number)
- Interactive Sanitary Sewer System Spill Report
- Sewage Spill Incident Maps
- Online CIWQS Sanitary Sewer System Database Access and Use
- Sanitary Sewer System Spill Data
- Sanitary Sewer Systems Waste Discharge Requirements Training
- Sanitary Sewer Systems General Order Contacts

Sewage Spill Incident Maps

These interactive geographic information system (GIS) maps, which are updated nightly, plot certified spills from sanitary sewer systems (not including any spills from wastewater [sewage] treatment plants). Agencies report and certify spills in the state's online California Integrated Water Quality System (CIWQS). Spill information includes the spill location, amount, source, and name of the responsible agency. Discrete data on category 4 spills are only required to be reported annually so are not included in this report.

- View the Sanitary Sewer Systems Spills Incident Map.

The following map shows the spills from privately-owned sewer laterals and/or private sanitary sewer systems voluntarily reported into CIWQS by enrollees. Private laterals spills are caused from failures in sewer pipes that tie private businesses and homes into the public sewer system.

- View the Private Sewer Laterals and/or Private Sanitary Sewer Systems Spill Incident Map

Online Sanitary Sewer System Database Access and Use

The Sanitary Sewer System Database is accessed through the California Integrated Water Quality System (CIWQS), which is the State Water Board's regulatory and water quality information management system.

Subscribe to our Email Lists

- Subscribe to our email lists under the "Water Quality" topics.

Contacts

General Inquiries:

SanitarySewer@waterboards.ca.gov

General Order Compliance Tools

How to Develop and Upload Sewer System Management Plan

- SSMP Development Guidance Manual (Prepared by BACWA)
- Guidance: SSMP Upload and Certification
- Training Video - How to Submit SSMPs in CIWQS

How to Report and Certify Spill Reports in CIWQS

- Guidance: Category 1 Spill
- Guidance: Category 2 Spill
- Training Video – Submitting Cat 1 and 2 Draft Spill Report
- Training Video – Submitting Cat 1 and 2 Certified Spill Report
- Guidance: Category 3 Spill
- Guidance: Category 4 Spill
- Guidance: Enrollee Owned/Operated Lateral Spills

Statewide Sanitary Sewer Systems General Order (2022-0103-DWQ) Overview

- Training Video

How to Register for a Legally Responsible Official User Account in CIWQS

- Guidance Document
- Training Video

How to Submit and Certify an Annual Report including System Performance Analysis Graphs in CIWQS

- Guidance Document

Historical Information

Previous historical information can be found on the Historical Information webpage.

https://www.waterboards.ca.gov/water_issues/programs/sso/

Overview

General Order and Posted
Formatting Requirements

Submit electronic spatial map of
sewer system service area

Includes Wastewater Treatment
Facility (WWTF) Point File

Subject to change upon release of
State Water Board submittal tool

Goal

Streamline data submittal process

Generate Statewide database

Develop format for future State Water Board online submittal tool

General Specifications

File Format: Must be Shapefile
(.SHP) or KML/KMZ

Any other format is non-compliant

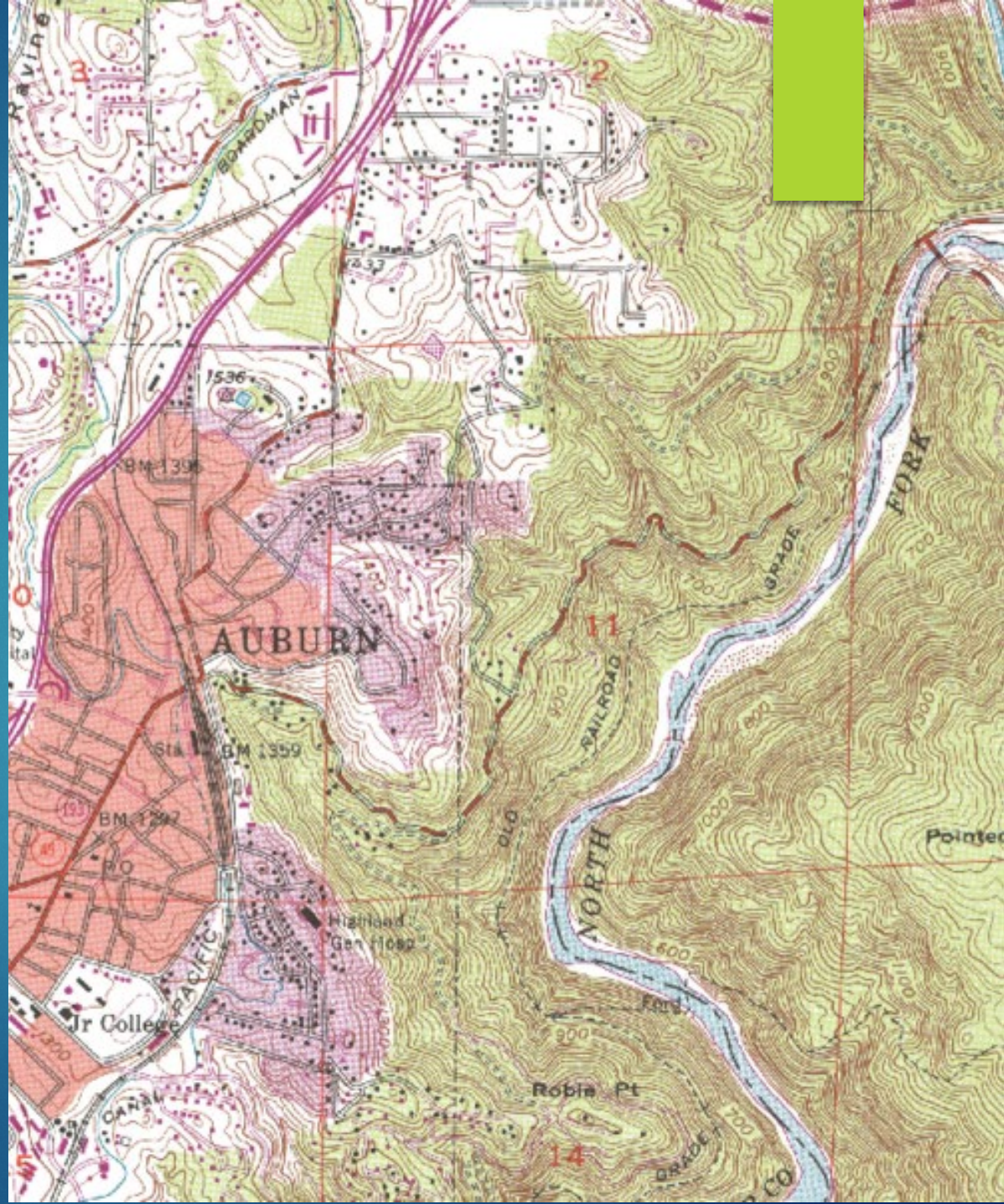
Minimum scale: 1:24,000

One boundary per file

Multipart polygons must be
dissolved into a single feature

General Specifications

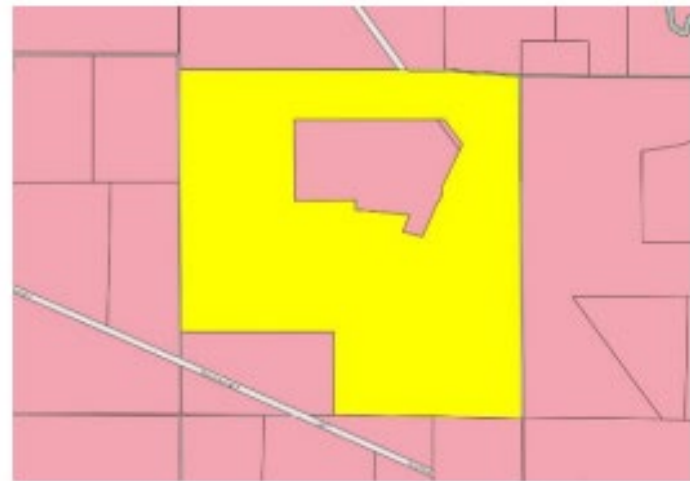
Minimum
scale:
1:24,000



Content Requirements

Include:
Agency's
jurisdictional
boundary

Clearly exclude
unserved
internal areas



WWTF Point File

If WWTF is *within* service boundary: Include WWTF Point File

If WWTF is *outside* service boundary: Submit Waste Discharge Identification Number (WDID)

WWTF Point File Specifications

Minimum scale: 1:24,000

One point per WWTF

Location can be any point within WWTF footprint

Recommended: parcel centroid

Content Requirements



Do NOT Include:

-
- Collection system components (pipes, manholes, etc.)
-
- Interior features, shading, or annotations
-
- Drawing enhancements (e.g., title blocks, dates)

Unacceptable File Types

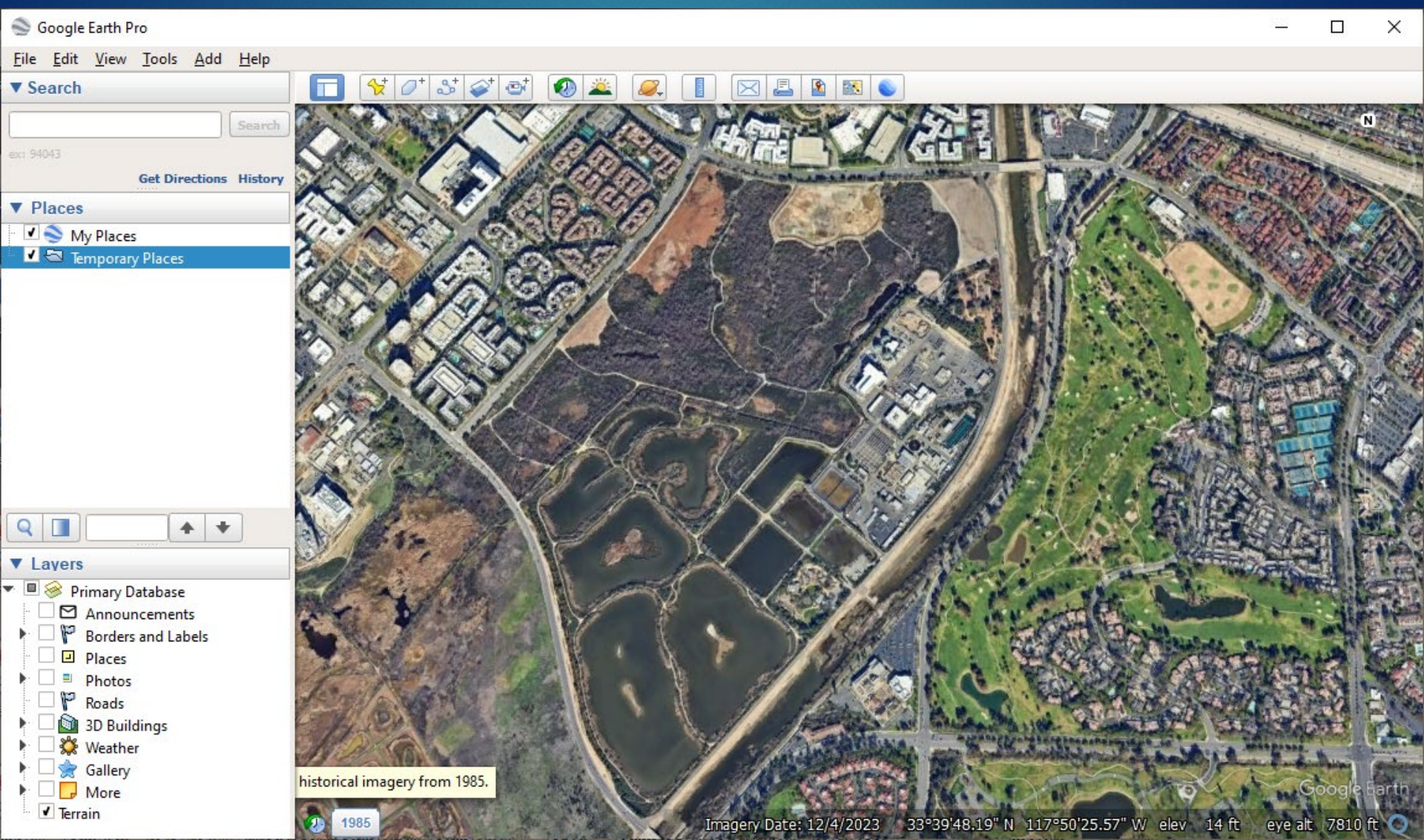
Image files (JPG, PNG, TIFF, PDF)

Schematic or non-geo-located based files

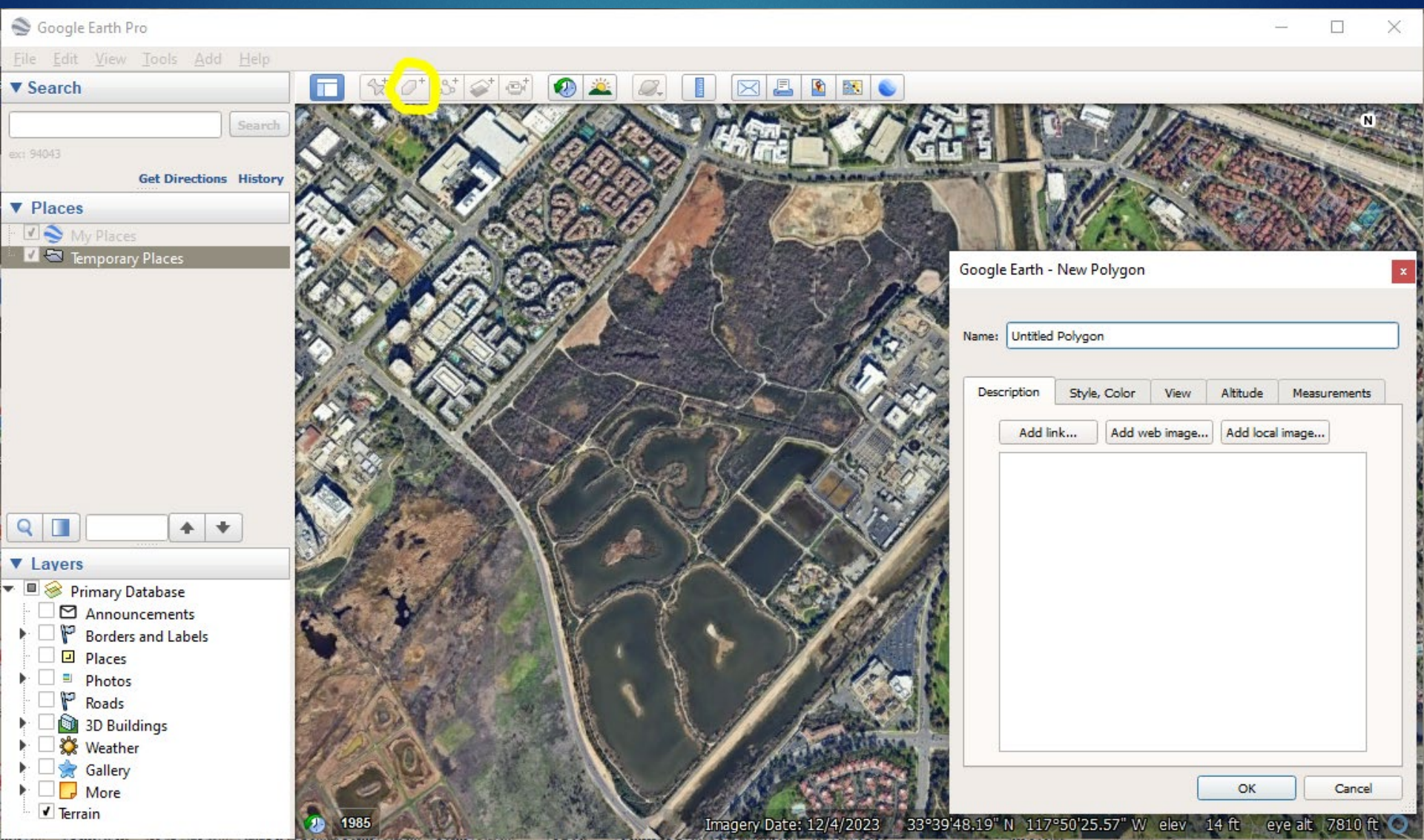
Engineering vector files
(AutoCAD, DXF, DWG)

Hand-drawn or scanned
images

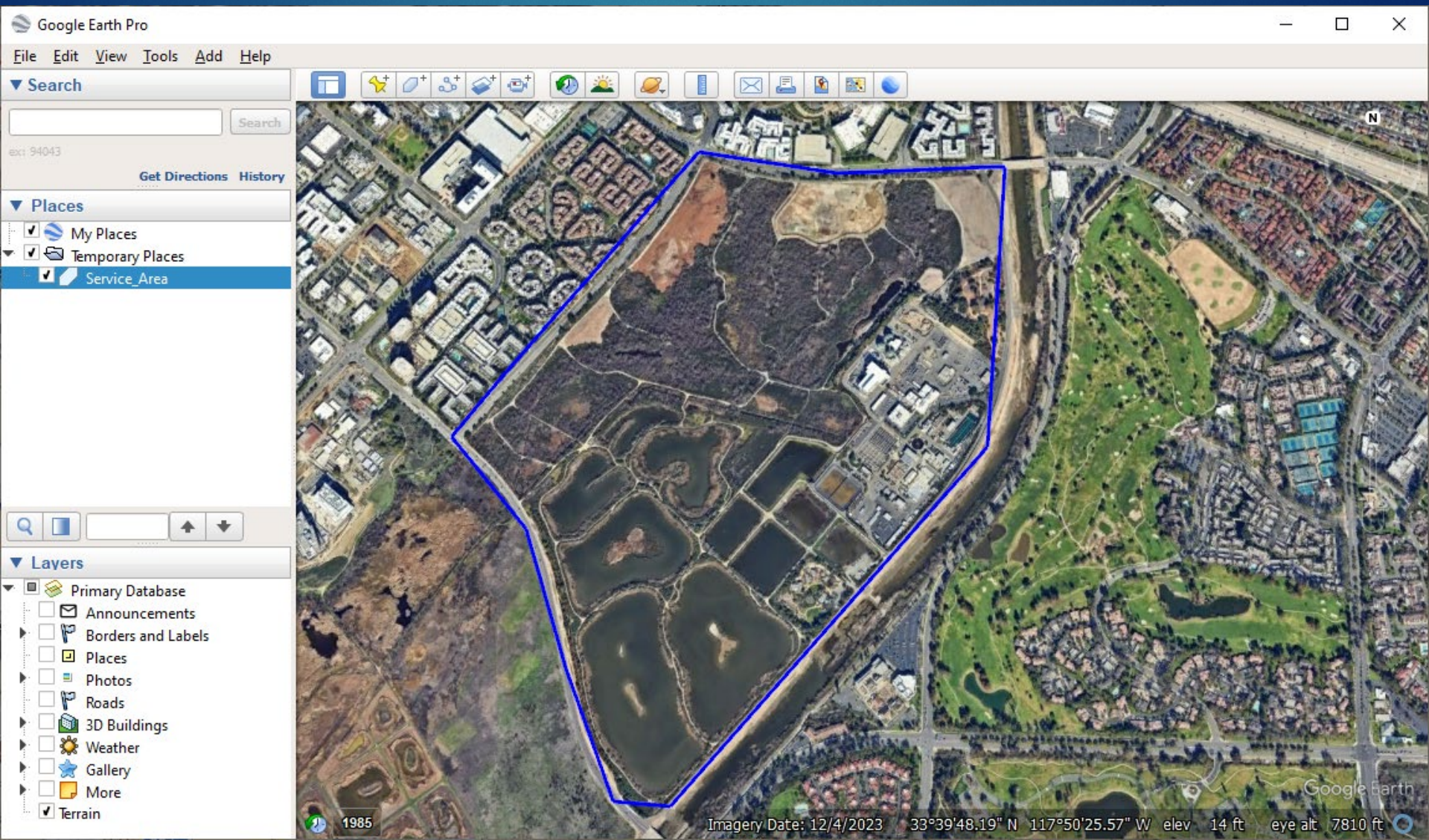
Google Earth



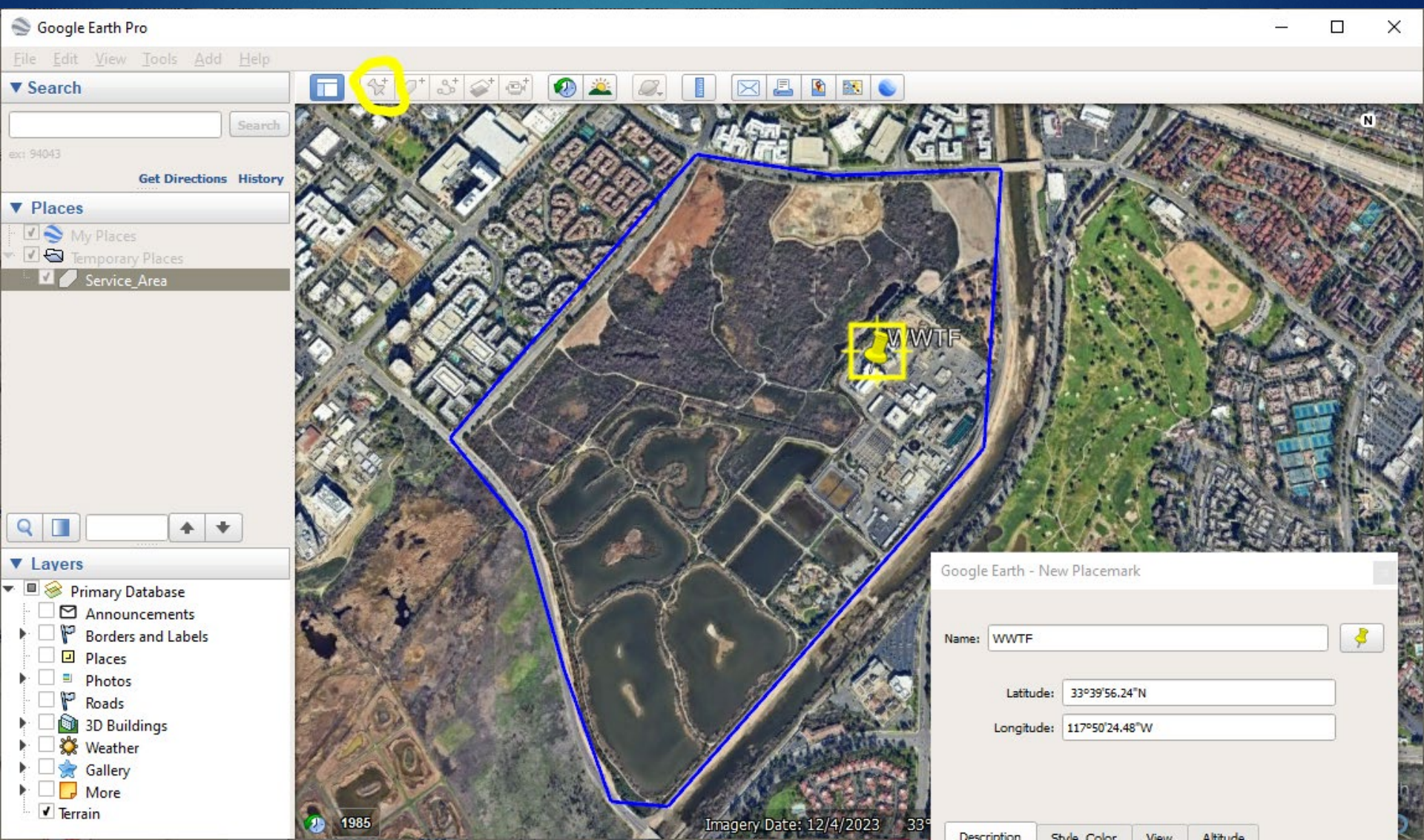
Google Earth



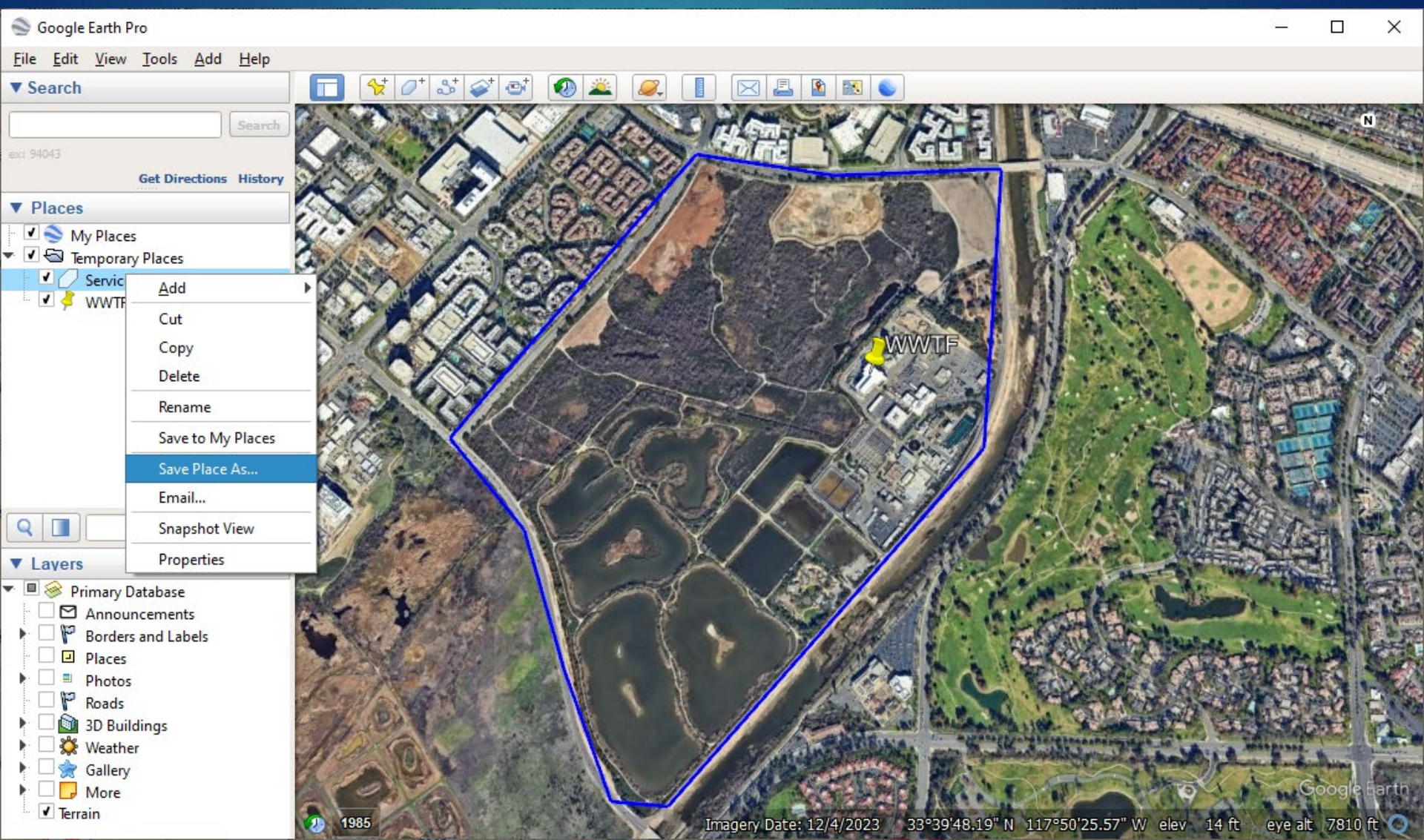
Google Earth



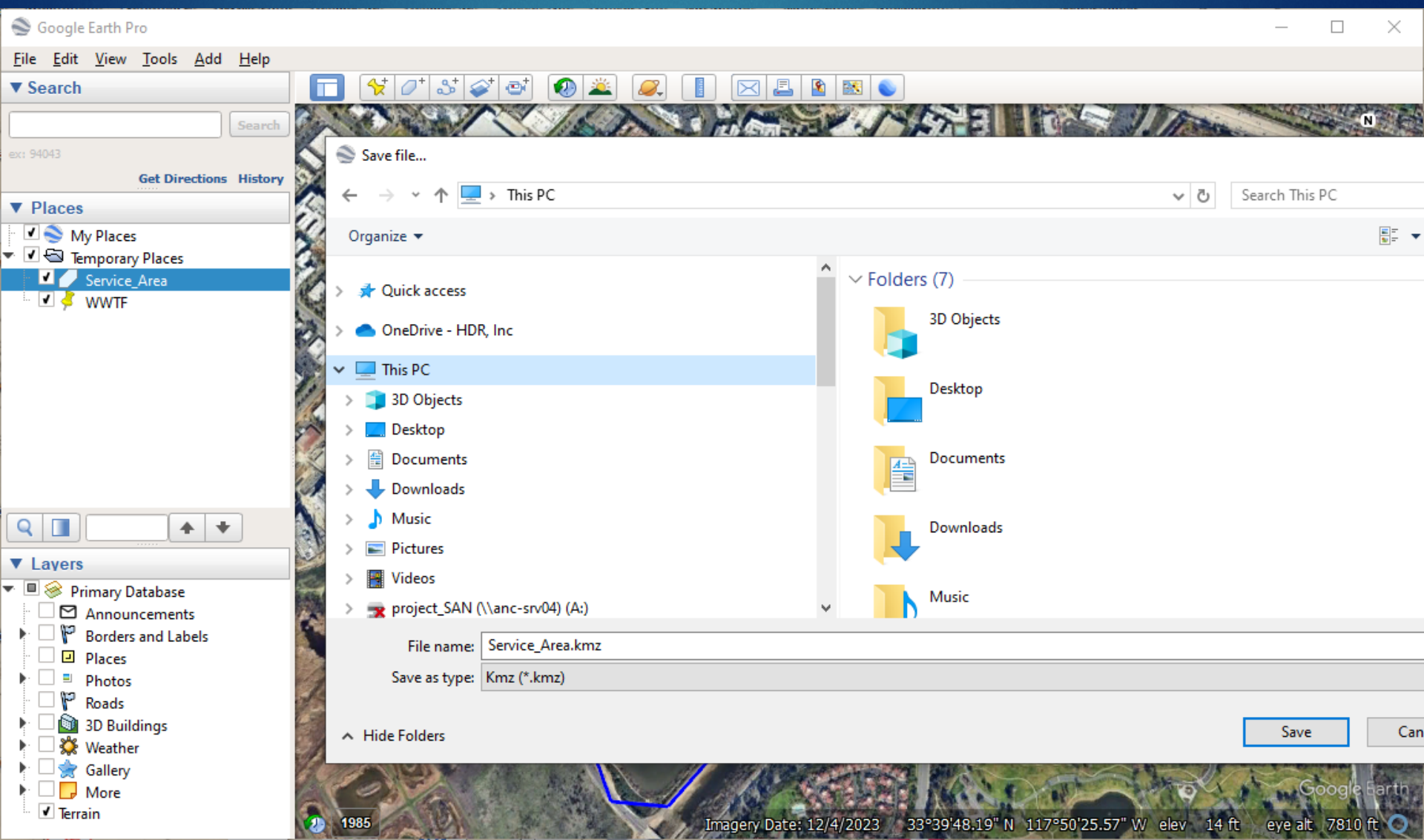
Google Earth



Google Earth



Google Earth



AutoCad

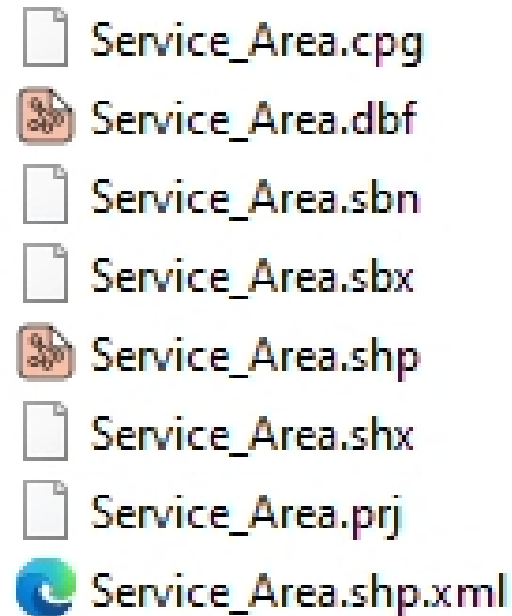
- ▶ Export a Boundary polygon and/or WWTF point directly from AutoCAD using the MAPEXPORT command
- ▶ Boundary needs to be a single Polygon
- ▶ WWTF Needs to be a Single Point
- ▶ File needs a defined coordinate system
- ▶ select the Google KML file format and a location for the exported files

GIS

- ▶ Can be created in ESRI's ArcGIS, open-source QGIS software and many other software packages
- ▶ Create single Boundary polygon and/or WWTF point
- ▶ Boundary needs to be a single Polygon
- ▶ WWTF Needs to be a Single Point
- ▶ File needs a defined coordinate system

GIS

- ▶ Shapefiles are comprised of six or more individual files

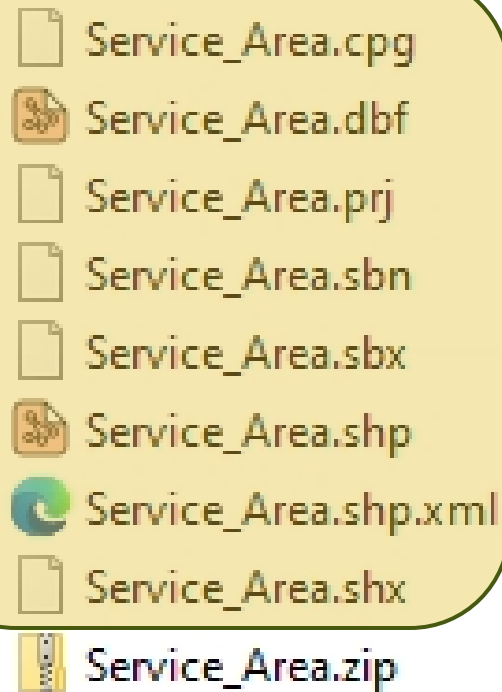


A vertical list of eight files associated with a Shapefile named 'Service_Area'. Each file name is preceded by a small icon representing its file type: a white document icon for .cpg, .sbn, .sbx, .shx, and .prj; an orange database icon for .dbf; and a blue/green XML icon for .shp.xml.

- Service_Area.cpg
- Service_Area.dbf
- Service_Area.sbn
- Service_Area.sbx
- Service_Area.shp
- Service_Area.shx
- Service_Area.prj
- Service_Area.shp.xml

GIS

- In windows file explorer zip all files into an equally named zip file



Assistance for Disadvantaged Communities



Enrollees may
contact the State
Water Board



Support available for
electronic mapping
compliance

More Information

- ▶ [electronic-sewer-system-service-area-boundary-map-specifications.pdf](#)

Questions



Presenter Info

- ▶ Michael Flores – Asset Management Technical Lead
 - ▶ Michael.flores@hdrinc.com
 - ▶ (714) 785-9421
- ▶ Anders Burvall – GIS Manager
 - ▶ Anders.Burvall@hdrinc.com
 - ▶ (858) 712-8326