

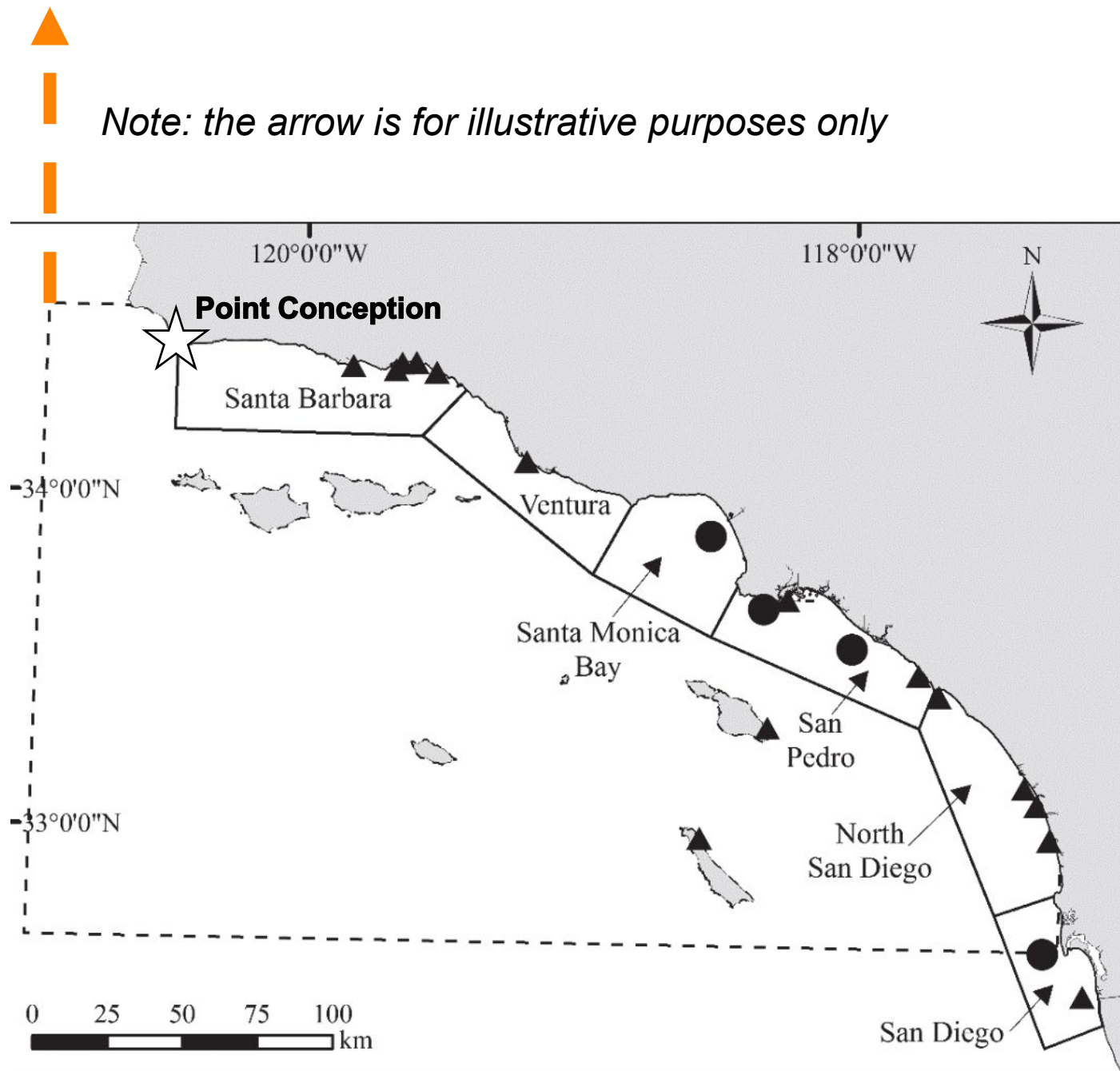
# What's Ahead?





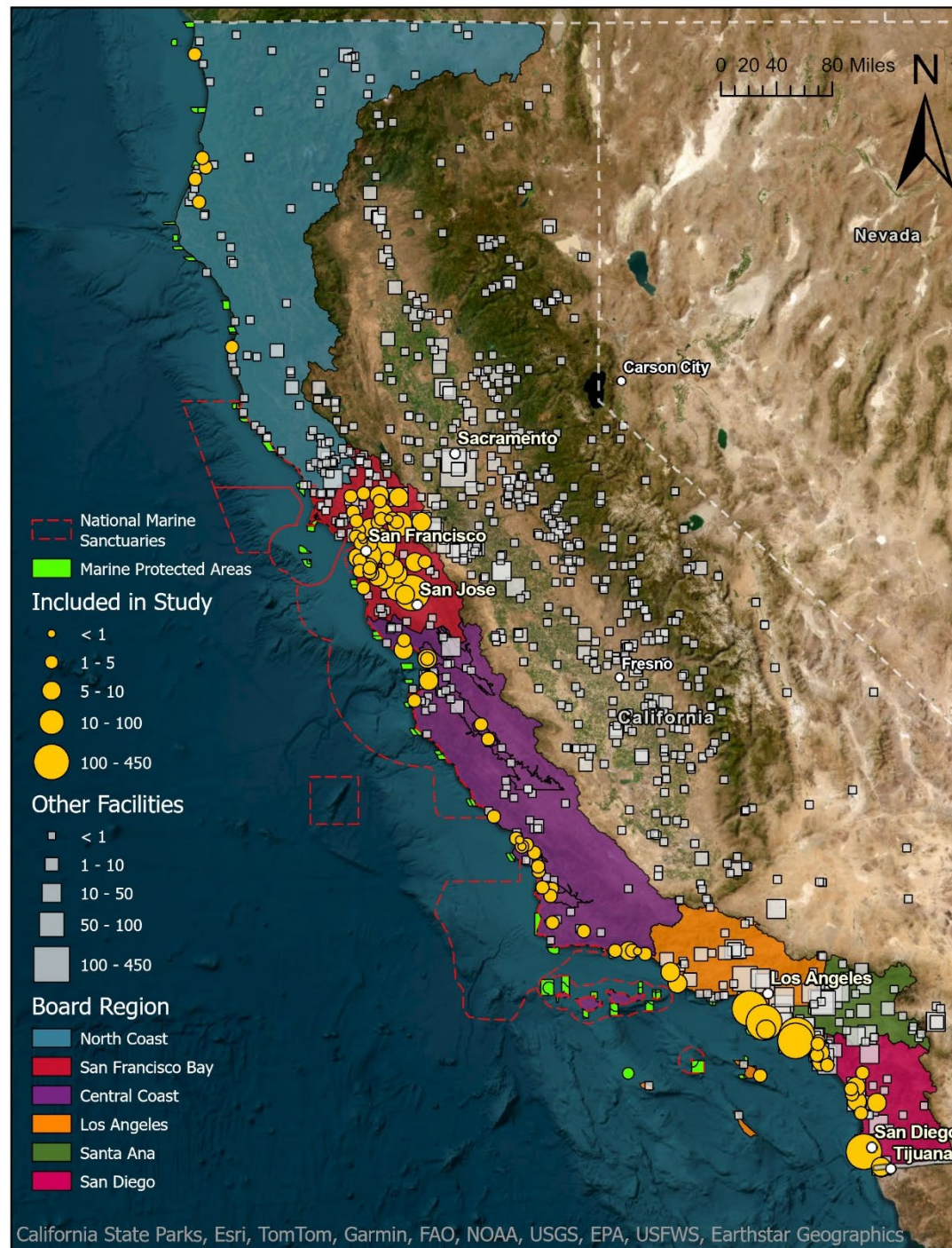
# Going North!

*The Model Boundaries are Expanding to the California/Oregon Border*



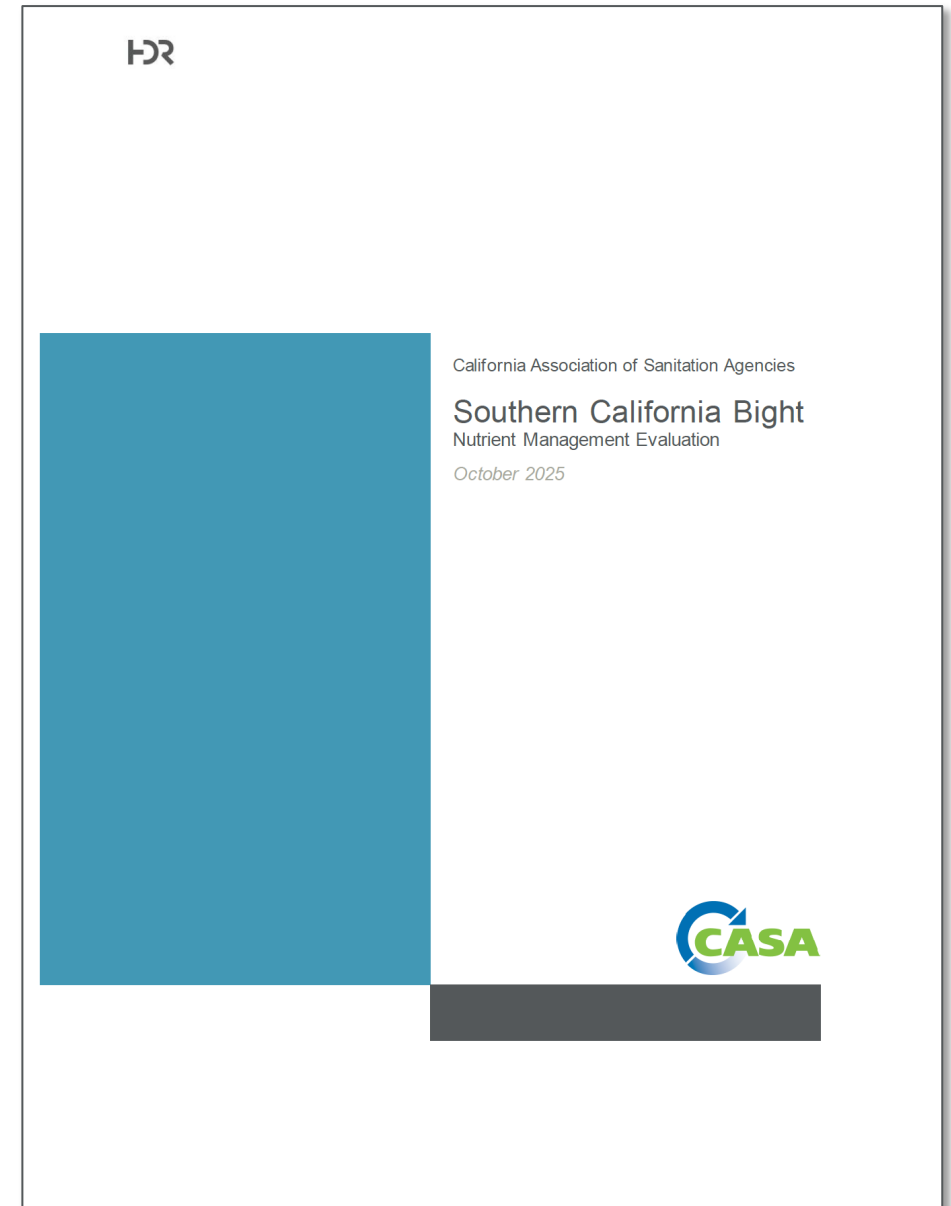


# Publicly Owned Treatment Works



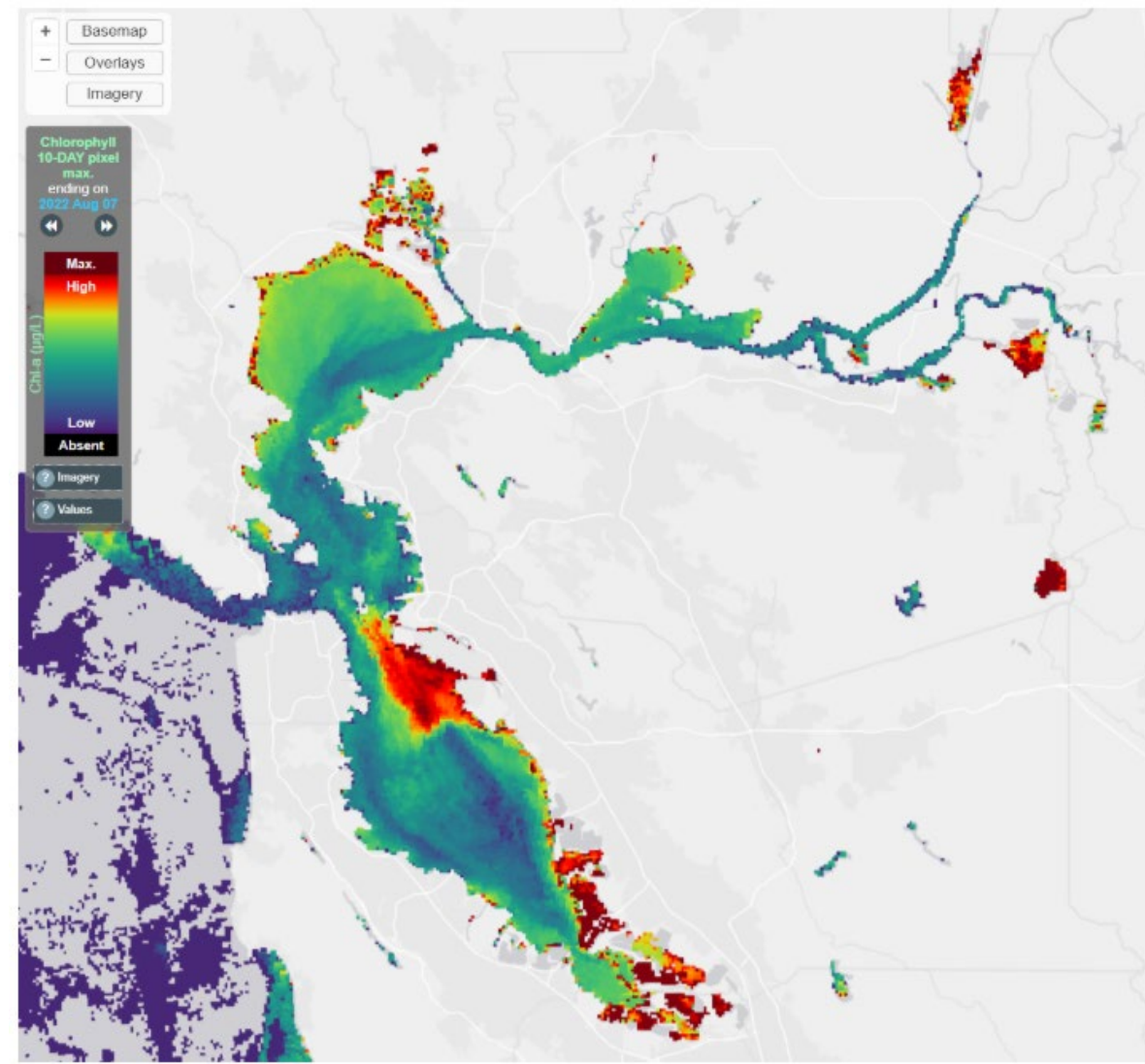
# Key Parameters Included in the Updated Study

- Nutrient Loads from Coastal Dischargers with Permitted Average Dry Weather Flow (ADWF) Capacities >1 mgd
- Other Features
  - Role of Reuse in Nutrient Management
  - Energy & Chemical Demands
  - List of Planned Projects and the Associated Impacts (Costs, Energy, GHG emissions, etc.)



## Other On-Going Efforts (Beyond the Future Report that will Cover Entire CA Coast)

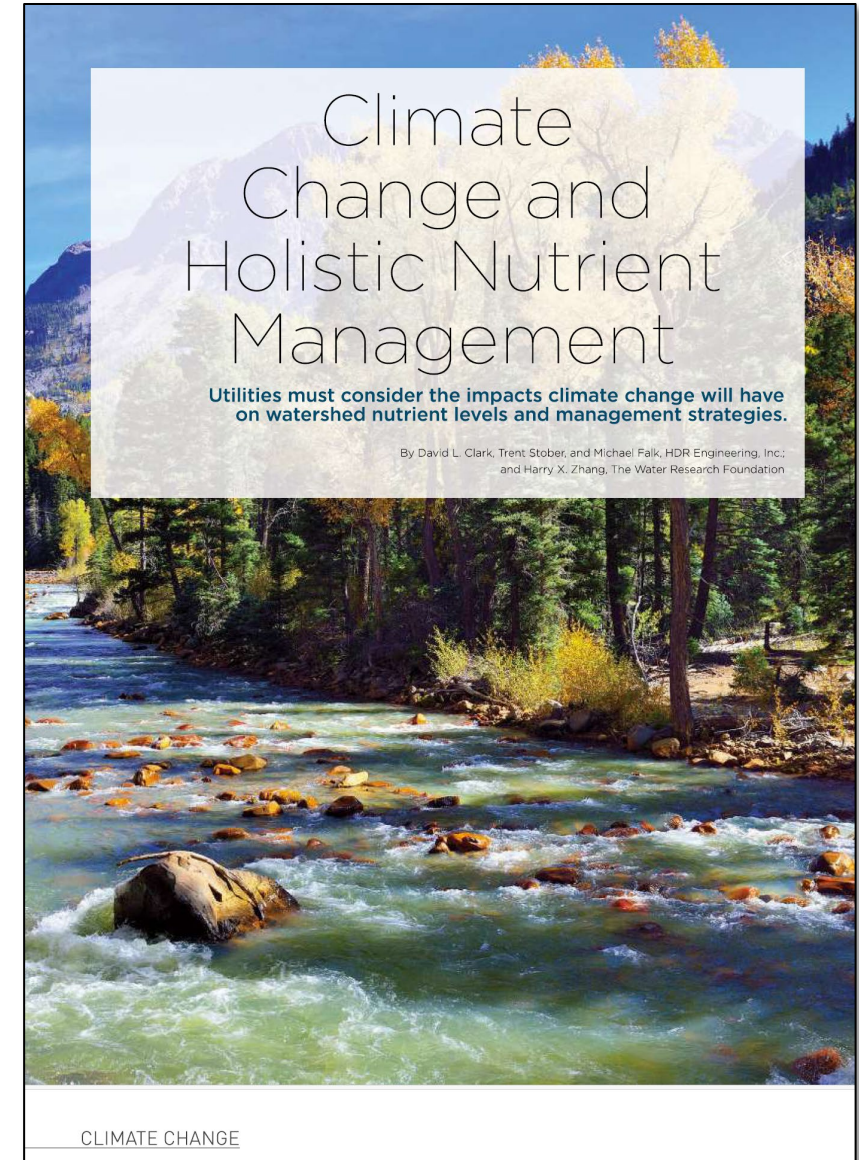
- Riverine Inputs to SoCal Bight
- Funding to Expand Evaluations per Plant (Prop 13 Funding?)
- Continued Support for Southern California Coastal Commission Water Research Project (SCCWRP)
- Technology Advancement (e.g., LACSD, Pure Water San Diego, Bay Area, etc.)



Harmful Algal Bloom Tracking Map  
Source: San Francisco Estuary Institute  
[Building a framework for an integrated HAB detection and monitoring system in San Francisco Estuary | San Francisco Estuary Institute](#)

# Vision to Advance a Pragmatic Nutrient Management Strategy across California

- Continue to Advance the Science (Bight, San Francisco Bay, Riverine Systems, etc.)
- Integrated Statewide Nutrient Accounting for POTWs (need to include Central Valley and beyond)
- Think Beyond the Practices (3 P's Reference):
  - Practices: we are really good at this!
  - Partnerships (e.g., BACWA)
  - Policy (e.g., Long Island Sound)

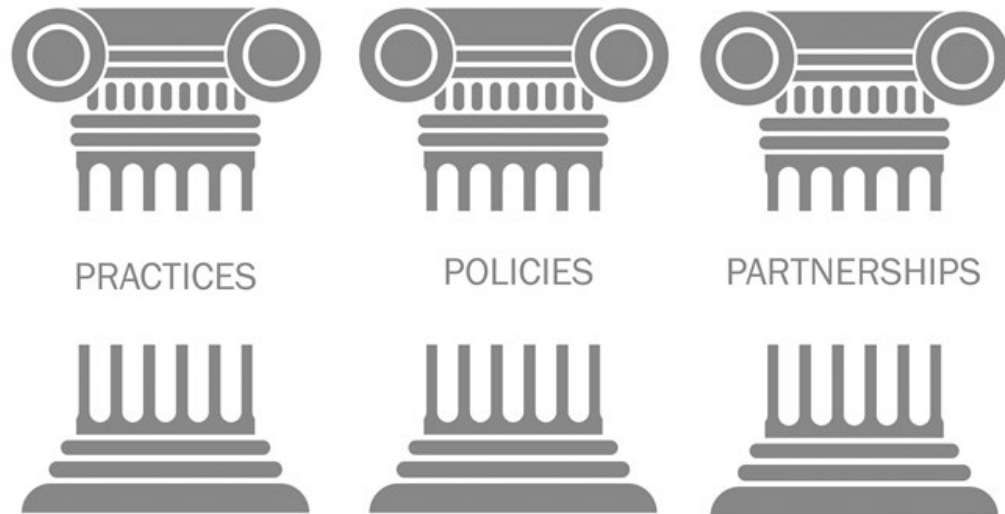


# Holistic Nutrient Management: Practices, Policies, and Partnerships (WRF4974)



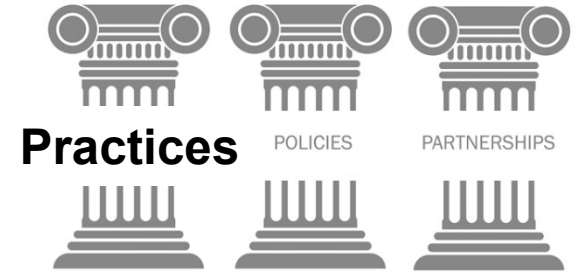
THE  
Water  
Research  
FOUNDATION

## Key Factors Influencing Holistic Nutrient Management



- Practices
  - Nutrient Removal Treatment
  - Best Management Practices
- Policies
  - Regulatory Frameworks
  - Watershed Governance
- Partnerships
  - Collaboration
  - Leadership

# Recommended Assessment to Foster Pragmatic Solutions: Consider the 3 P's



## Practices

Example (Pure Water Southern California)



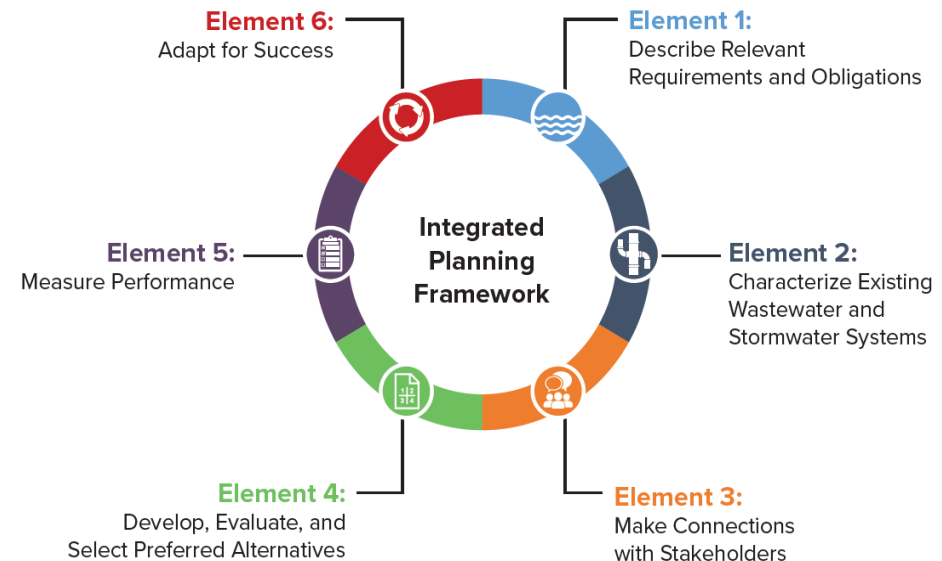
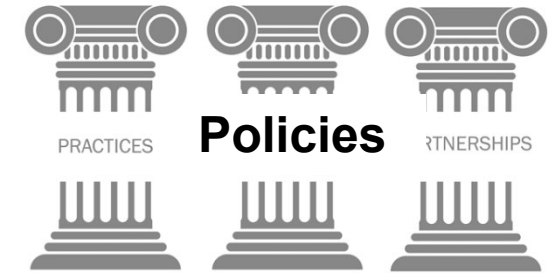
- Drivers:
  - Regional Water Supply Benefits
  - Nutrient Management
  - Others



# 3 P's Breakdown for SoCal Bight

## Policy

- Fostering Successful Compliance for Nutrient Management
  - Improved Nutrient Permitting
  - Nutrient Reduction Incentives
  - Pay-for-Performance Nutrient Reductions
- Total Maximum Daily Loads and Alternative Approaches
- Adaptive Management
- Integrated Planning
- Funding and Financing



### Integrated Planning (Codified in 2019):

- Community Priorities
- Informs NPDES Permitting & Compliance Agreements
- Regulatory Certainty
- Affordability
- Adaptive Management
- Facilitates One Water Approaches

# 3 P's Breakdown for SoCal Bight Partnerships

- Common Elements of Successful Partnerships
- Barriers to Effective Partnerships
  - Undefined Roles and Responsibilities
  - Reduced Sustained Participation
  - Disruption from Non-Participants
  - Limited Sustained Funding
  - Inadequate Data Compilation and Dissemination
- Partner Roles and Key Success Factors
  - Leadership
  - Collaboration Catalysts
  - Proactive Engagement

